

bs-5023R**[Primary Antibody]****AGPAT1 Rabbit pAb****BioSS**
ANTIBODIES

www.bioss.com.cn

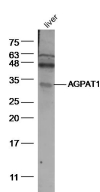
sales@bioss.com.cn

techsupport@bioss.com.cn

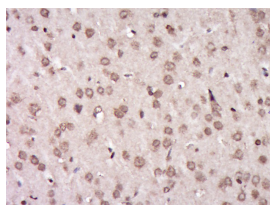
400-901-9800

— DATASHEET —

Host: Rabbit	Isotype: IgG	Applications: WB (1:500-2000)
Clonality: Polyclonal		IHC-P (1:100-500)
GeneID: 10554	SWISS: Q99943	IHC-F (1:100-500)
Target: AGPAT1		IF (1:100-500)
Immunogen: KLH conjugated synthetic peptide derived from human AGPAT1: 101-200/283.		Reactivity: Mouse, Rat (predicted: Human, Rabbit, Pig, Sheep, Cow, Dog, Horse)
Purification: affinity purified by Protein A		Predicted MW.: 31 kDa
Concentration: 1mg/ml		Subcellular Location: Cytoplasm
Storage: 0.01M TBS (pH7.4) with 1% BSA, 0.02% Proclin300 and 50% Glycerol. Shipped at 4°C. Store at -20°C for one year. Avoid repeated freeze/thaw cycles.		
Background: AGPAT1 converts lysophosphatidic acid (LPA) into phosphatidic acid by incorporating an acyl moiety at the sn-2 position of the glycerol backbone.		

— VALIDATION IMAGES —

Sample: Siver (Mouse) Lysate at 40 ug Primary:
Anti-AGPAT1 (bs-5023R) at 1/500 dilution
Secondary: IRDye800CW Goat Anti-Rabbit IgG at
1/20000 dilution Predicted band size: 31 kD
Observed band size: 31 kD



Paraformaldehyde-fixed, paraffin embedded
(Rat brain); Antigen retrieval by boiling in
sodium citrate buffer (pH6.0) for 15min; Block
endogenous peroxidase by 3% hydrogen
peroxide for 20 minutes; Blocking buffer (normal
goat serum) at 37°C for 30min; Antibody
incubation with (AGPAT1) Polyclonal Antibody,
Unconjugated (bs-5023R) at 1:400 overnight at
4°C, followed by operating according to SP
Kit(Rabbit) (sp-0023) instructions and DAB
staining.

— SELECTED CITATIONS —

- **[IF=6.208]** Chang-Hai Liu. et al. CircRNA-PI4KB Induces Hepatic Lipid Deposition in Non-Alcoholic Fatty Liver Disease by Transporting miRNA-122 to Extra-Hepatocytes. INT J MOL SCI. 2023 Jan;24(2):1297 WB ;Human. 36674813