

bs-7710R

[Primary Antibody]

CENPP Rabbit pAb

Bioss
ANTIBODIES

www.bioss.com.cn

sales@bioss.com.cn

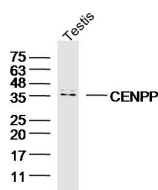
techsupport@bioss.com.cn

400-901-9800

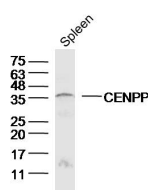
— DATASHEET —

Host: Rabbit	Isotype: IgG	Applications: WB (1:500-2000) IHC-P (1:100-500) IHC-F (1:100-500) IF (1:100-500)
Clonality: Polyclonal		
GeneID: 401541		
Target: CENPP		
Immunogen: KLH conjugated synthetic peptide derived from human CENPP: 81-180/288.		
Purification: affinity purified by Protein A		Reactivity: Human, Mouse, Rat (predicted: Cow, Horse)
Concentration: 1mg/ml		Predicted MW.: 33 kDa
Storage: 0.01M TBS (pH7.4) with 1% BSA, 0.02% Proclin300 and 50% Glycerol. Shipped at 4°C. Store at -20°C for one year. Avoid repeated freeze/thaw cycles.		Subcellular Location: Nucleus
Background: CENPP is a component of the CENPA-CAD (nucleosome distal) complex, a complex recruited to centromeres which is involved in assembly of kinetochore proteins, mitotic progression and chromosome segregation.		

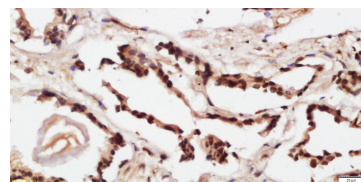
— VALIDATION IMAGES —



Sample: Testis (Mouse) Lysate at 40 ug Primary:
Anti-CENPP(bs-7710R) at 1/300 dilution
Secondary: IRDye800CW Goat Anti-Rabbit IgG at
1/20000 dilution Predicted band size: 33kD
Observed band size: 35kD



Sample: Spleen (Mouse) Lysate at 40 ug Primary:
Anti-CENPP(bs-7710R) at 1/300 dilution
Secondary: IRDye800CW Goat Anti-Rabbit IgG at
1/20000 dilution Predicted band size: 33kD
Observed band size: 36kD



Tissue/cell: human prostate tissue; 4%
Paraformaldehyde-fixed and paraffin-
embedded; Antigen retrieval: citrate buffer (
0.01M, pH 6.0), Boiling bathing for 15min; Block
endogenous peroxidase by 3% Hydrogen
peroxide for 30min; Blocking buffer (normal goat
serum, C-0005) at 37°C for 20 min; Incubation:
Anti-CENPP Polyclonal Antibody,
Unconjugated(bs-7710R) 1:500, overnight at 4°C,
followed by conjugation to the secondary
antibody(SP-0023) and DAB(C-0010) staining