

bs-11866R**[Primary Antibody]****ASH1L Rabbit pAb****Bioss**
ANTIBODIES

www.bioss.com.cn

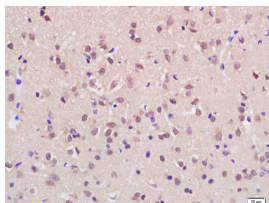
sales@bioss.com.cn

techsupport@bioss.com.cn

400-901-9800

— DATASHEET —

Host: Rabbit	Isotype: IgG	Applications: IHC-P (1:100-500) IHC-F (1:100-500) IF (1:100-500) Reactivity: Rat (predicted: Human, Mouse, Rabbit, Pig, Sheep, Cow, Chicken, Dog, Horse) Predicted MW.: 333 kDa Subcellular Location: Cell membrane ,Nucleus
Clonality: Polyclonal		
GeneID: 55870	SWISS: Q9NR48	
Target: ASH1L		
Immunogen: KLH conjugated synthetic peptide derived from human ASH1L: 1985-2060/2969.		
Purification: affinity purified by Protein A		
Concentration: 1mg/ml		
Storage: 0.01M TBS (pH7.4) with 1% BSA, 0.02% Proclin300 and 50% Glycerol. Shipped at 4°C. Store at -20°C for one year. Avoid repeated freeze/thaw cycles.		
Background: ASH1L is a 2,969 amino acid protein encoded by the human gene ASH1L. ASH1L belongs to the histone-lysine methyltransferase family (SET2 subfamily) and contains three AT hook DNA-binding domains, one AWS domain, one BAH domain, one bromodomain, one PHD-type zinc finger, one post-SET domain and one SET domain. It is a widely expressed nuclear protein with highest expression found in brain, heart and kidney. ASH1L is a histone methyltransferase and is believed to methylate 'Lys-4' of Histone H3, which is a specific tag for epigenetic transcriptional activation.		

— VALIDATION IMAGES —

Tissue/cell: rat brain tissue; 4% Paraformaldehyde-fixed and paraffin-embedded; Antigen retrieval: citrate buffer (0.01M, pH 6.0), Boiling bathing for 15min; Block endogenous peroxidase by 3% Hydrogen peroxide for 30min; Blocking buffer (normal goat serum, C-0005) at 37°C for 20 min; Incubation: Anti-KMT2H/ASH1L Polyclonal Antibody, Unconjugated(bs-11866R) 1:200, overnight at 4°C, followed by conjugation to the secondary antibody(SP-0023) and DAB(C-0010) staining