

**bs-11865R****[ Primary Antibody ]****KLF7 Rabbit pAb****Bioss**  
**ANTIBODIES**

www.bioss.com.cn

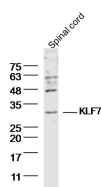
sales@bioss.com.cn

techsupport@bioss.com.cn

400-901-9800

**— DATASHEET —**

<b>Host:</b> Rabbit	<b>Isotype:</b> IgG	<b>Applications:</b> WB (1:500-2000)
<b>Clonality:</b> Polyclonal		<b>Reactivity:</b> Mouse (predicted: Human, Rat, Rabbit, Pig, Sheep, Cow, Chicken, Dog, Horse)
<b>GeneID:</b> 8609	<b>SWISS:</b> O75840	
<b>Target:</b> KLF7		<b>Predicted MW.:</b> 33 kDa
<b>Immunogen:</b> KLH conjugated synthetic peptide derived from human KLF7: 131-210/302.		<b>Subcellular Location:</b> Nucleus
<b>Purification:</b> affinity purified by Protein A		
<b>Concentration:</b> 1mg/ml		
<b>Storage:</b> 0.01M TBS (pH7.4) with 1% BSA, 0.02% Proclin300 and 50% Glycerol. Shipped at 4°C. Store at -20°C for one year. Avoid repeated freeze/thaw cycles.		
<b>Background:</b> KLF7 is a transcriptional activator that belongs to the Krüppel C2H2-type zinc finger protein family. KLF7 targets promotor regions bearing CACCC elements in order to regulate transcription. It is believed that KLF7 is an important element for regulation of differentiation and the development of nervous systems. Specifically, increased expression of KLF7 is associated with neuronal precursors exiting the cell cycle and beginning to differentiate. Overexpression of KLF7 can lead to cell cycle arrest and a decrease in DNA synthesis. Also, KLF7 is thought to regulate the expression of Trk A, the receptor for nerve growth factor, which is required for the normal growth and maturation of neurons. KLF7 is a widely expressed protein with highest expression found in brain and nervous tissue.		

**— VALIDATION IMAGES —**

Sample: Spinal cord (Mouse) Lysate at 40 ug  
Primary: Anti-KLF7 (bs-11865R) at 1/300 dilution  
Secondary: IRDye800CW Goat Anti-Rabbit IgG at 1/20000 dilution  
Predicted band size: 33 kD  
Observed band size: 33 kD