

bs-15591R**[Primary Antibody]****LETM1 Rabbit pAb****Bioss**
ANTIBODIES

www.bioss.com.cn

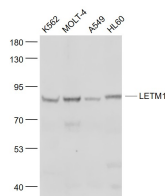
sales@bioss.com.cn

techsupport@bioss.com.cn

400-901-9800

— DATASHEET —

Host: Rabbit	Isotype: IgG	Applications: WB (1:500-2000)
Clonality: Polyclonal		Reactivity: Human (predicted: Mouse, Rat, Chicken, Dog, Horse)
GeneID: 3954	SWISS: Q95202	
Target: LETM1		Predicted MW.: 71 kDa
Immunogen: KLH conjugated synthetic peptide derived from human LETM1: 101-200/739.		Subcellular Location: Cytoplasm
Purification: affinity purified by Protein A		
Concentration: 1mg/ml		
Storage: 0.01M TBS (pH7.4) with 1% BSA, 0.02% Proclin300 and 50% Glycerol. Shipped at 4°C. Store at -20°C for one year. Avoid repeated freeze/thaw cycles.		
Background: This gene encodes a protein that is localized to the inner mitochondrial membrane. The protein functions to maintain the mitochondrial tubular shapes and is required for normal mitochondrial morphology and cellular viability. Mutations in this gene cause Wolf-Hirschhorn syndrome, a complex malformation syndrome caused by the deletion of parts of the distal short arm of chromosome 4. Related pseudogenes have been identified on chromosomes 8, 15 and 19. [provided by RefSeq, Oct 2009].		

— VALIDATION IMAGES —

Sample: K562(Human) Cell Lysate at 30 ug
MOLT-4(Human) Cell Lysate at 30 ug
A549(Human) Cell Lysate at 30 ug HL60(Human)
Cell Lysate at 30 ug Primary: Anti- LETM1
(bs-15591R) at 1/1000 dilution Secondary:
IRDye800CW Goat Anti-Rabbit IgG at 1/20000
dilution Predicted band size: 71 kD Observed
band size: 75 kD