

bsm-60560R**[Primary Antibody]**

Bioss
ANTIBODIES

www.bioss.com.cn

sales@bioss.com.cn

techsupport@bioss.com.cn

400-901-9800

Fibrillarin Recombinant Rabbit mAb

— DATASHEET —

Host: Rabbit**Isotype:** IgG/Kappa**Clonality:** Recombinant**CloneNo.:** H4C3**Target:** Fibrillarin**Purification:** affinity purified by Protein A**Concentration:** 1mg/ml

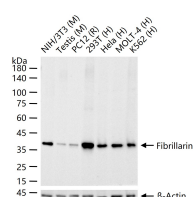
Storage: 0.01M TBS (pH7.4) with 1% BSA, 0.02% Proclin300 and 50% Glycerol.
Shipped at 4°C. Store at -20°C for one year. Avoid repeated freeze/thaw cycles.

Background: Involved in pre-rRNA processing. Utilizes the methyl donor S-adenosyl-L-methionine to catalyze the site-specific 2'-hydroxyl methylation of ribose moieties in pre-ribosomal RNA. Site specificity is provided by a guide RNA that base pairs with the substrate. Methylation occurs at a characteristic distance from the sequence involved in base pairing with the guide RNA.

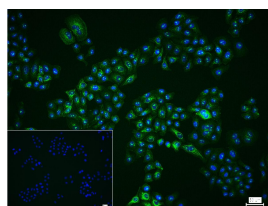
Applications: WB (1:500-2000)**Flow-Cyt** (1:50-100)**ICC/IF** (1:50-200)**Reactivity:** Human, Mouse, Rat

Subcellular Location: Nucleus

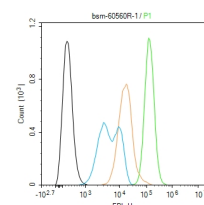
— VALIDATION IMAGES —



25 ug total protein per lane of various lysates (see on figure) probed with Fibrillarin monoclonal antibody, unconjugated (bsm-60560R) at 1:1000 dilution and 4°C overnight incubation. Followed by conjugated secondary antibody incubation at r.t. for 60 min.



4% Paraformaldehyde-fixed HepG2 (H) cell; Triton X-100 at r.t. for 20 min; Antibody incubation with (FBL) monoclonal Antibody, unconjugated (bsm-60560R) 1:100, 90 min at 37°C; followed by conjugated Goat Anti-Rabbit IgG antibody (green, bs-60295G-BF488) at 37°C for 90 min, DAPI (blue, C02-04002) was used to stain the cell nuclei. PBS instead of the primary antibody was used as the blank control.



The HepG2 (H) cells were fixed with 4% PFA (10 min at r.t.) and then permeabilized with 90% ice-cold methanol for 20 min at -20°C, the cells then were incubated in 5%BSA to block non-specific protein-protein interactions (30 min at r.t.). Primary Antibody (green): Rabbit Anti-FBL antibody (bsm-60560R, 1:100); Secondary Antibody (white blue): Goat anti-Rabbit IgG-BF488 (bs-60295G-BF488): 1 µg/test. Isotype Control (orange): Rabbit IgG (bs-0295P). Blank control (black): PBS. Acquisition of 20,000 events was performed.