

**bsm-60456R**

**[ Primary Antibody ]**

**Bioss**  
ANTIBODIES

www.bioss.com.cn

sales@bioss.com.cn

techsupport@bioss.com.cn

400-901-9800

## GPNMB Recombinant Rabbit mAb

### DATASHEET

**Host:** Rabbit

**Clonality:** Recombinant

**Target:** GPNMB

**Purification:** affinity purified by Protein A

**Concentration:** 1mg/ml

**Storage:** 0.01M TBS (pH7.4) with 1% BSA, 0.02% Proclin300 and 50% Glycerol.  
Shipped at 4°C. Store at -20°C for one year. Avoid repeated freeze/thaw cycles.

**Background:** The protein encoded by this gene is a type I transmembrane glycoprotein which shows homology to the pMEL17 precursor, a melanocyte-specific protein. GPNMB shows expression in the lowly metastatic human melanoma cell lines and xenografts but does not show expression in the highly metastatic cell lines. GPNMB may be involved in growth delay and reduction of metastatic potential. Two transcript variants encoding different isoforms have been found for this gene. [provided by RefSeq, Jul 2008]

**Isotype:** IgG

**CloneNo.:** F8D5

**Applications:** WB (1:500-1000)

**IHC-P** (1:100-500)

**IHC-F** (1:100-500)

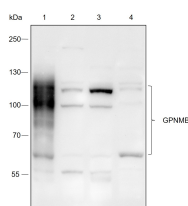
**IF** (1:100-500)

**Flow-Cyt** (1:50-100)

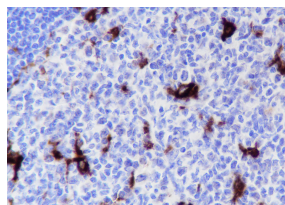
**Reactivity:** Human, Mouse

**Subcellular Location:** Cell membrane

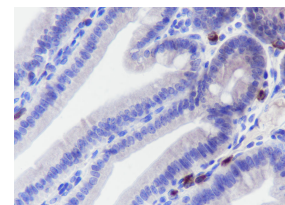
### VALIDATION IMAGES



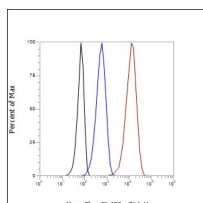
Blocking buffer: 5% NFDM/TBST Primary ab dilution: 1:1000 Primary ab incubation condition: 2 hours at room temperature Secondary ab: Goat Anti-Rabbit IgG H&L (HRP) Lysate: 1: A375, 2: B16-F0, 3: EL4, IL-2, 4: HeLa Protein loading quantity: 20 µg Exposure time: 60 s Predicted MW: 64 kDa Observed MW: 120,95,65 kDa



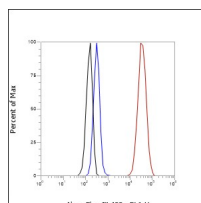
Tissue: Human tonsil Section type: Formalin fixed & Paraffin -embedded section Retrieval method: High temperature and high pressure Retrieval buffer: Tris/EDTA buffer, pH 9.0 Primary ab dilution: 1:1000 Primary ab incubation condition: 1 hour at room temperature Secondary ab: SP Kit(Rabbit) (sp-0023) Counter stain: Hematoxylin (Blue) Comment: Color brown is the positive signal for bsm-60456R



Tissue: Mouse small intestine Section type: Formalin fixed & Paraffin -embedded section Retrieval method: High temperature and high pressure Retrieval buffer: Tris/EDTA buffer, pH 9.0 Primary ab dilution: 1:1000 Primary ab incubation condition: 1 hour at room temperature Secondary ab: SP Kit(Rabbit) (sp-0023) Counter stain: Hematoxylin (Blue) Comment: Color brown is the positive signal for bsm-60456R



Cell line: EL4 Fixative: 4% Paraformaldehyde Permeabilization: 90% Methanol Primary ab dilution: 1:100 Secondary ab: Goat anti Rabbit IgG Unlabelled control: The cell without incubation with primary antibody and secondary antibody (Black line). Isotype control: Rabbit monoclonal IgG (Blue line). Comment: Line red is the positive signal for bsm-60456R



Cell line: A375 Fixative: 4% Paraformaldehyde Permeabilization: 90% Methanol Primary ab dilution: 1:100 Secondary ab: Goat anti Rabbit IgG Unlabelled control: The cell without incubation with primary antibody and secondary antibody (Black line). Isotype control: Rabbit monoclonal IgG (Blue line). Comment: Line red is the positive signal for bsm-60456R