

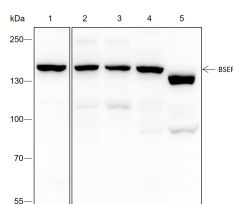
**bsm-60429R****[ Primary Antibody ]****BioSS**  
**ANTIBODIES**

www.bioss.com.cn

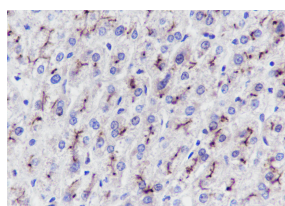
sales@bioss.com.cn

techsupport@bioss.com.cn

400-901-9800

**ABCB11 Recombinant Rabbit mAb****— DATASHEET —****Host:** Rabbit**Clonality:** Recombinant**Target:** ABCB11**Purification:** affinity purified by Protein A**Concentration:** 1mg/ml**Storage:** 0.01M TBS (pH7.4) with 1% BSA, 0.02% Proclin300 and 50% Glycerol.  
Shipped at 4°C. Store at -20°C for one year. Avoid repeated freeze/thaw cycles.**Background:** The membrane-associated protein encoded by this gene is a member of the superfamily of ATP-binding cassette (ABC) transporters. ABC proteins transport various molecules across extra- and intra-cellular membranes. ABC genes are divided into seven distinct subfamilies (ABC1, MDR/TAP, MRP, ALD, OABP, GCN20, White). This protein is a member of the MDR/TAP subfamily. Members of the MDR/TAP subfamily are involved in multidrug resistance. The protein encoded by this gene is the major canalicular bile salt export pump in man. Mutations in this gene cause a form of progressive familial intrahepatic cholestases which are a group of inherited disorders with severe cholestatic liver disease from early infancy. [provided by RefSeq, Jul 2008]**Isotype:** IgG**CloneNo.:** G8A8**Applications:** **WB** (1:500-1:1000)**IHC-P** (1:100-500)**IHC-F**  
**IF****Reactivity:** Human (predicted: Mouse)**Predicted**  
**MW.:** 146 kDa**Subcellular**  
**Location:** Cell membrane**— VALIDATION IMAGES —**

Blocking buffer: 5% NFDm/TBST Primary ab  
dilution: 1:1000 Primary ab incubation  
condition: 2 hours at room temperature  
Secondary ab: Goat Anti-Rabbit IgG H&L (HRP)  
Lysate: 1: Jurkat, 2: HepG2, 3: A549, 4: LNCaP, 5:  
Mouse liver Protein loading quantity: 20 µg  
Exposure time: 60 s Predicted MW: 146 kDa  
Observed MW: 146 kDa



Tissue: Human liver Section type: Formalin fixed  
& Paraffin -embedded section Retrieval method:  
High temperature and high pressure Retrieval  
buffer: Tris/EDTA buffer, pH 9.0 Primary ab  
dilution: 1:500 Primary ab incubation condition:  
1 hour at room temperature Secondary ab: SP  
Kit(Rabbit) (sp-0023) Counter stain: Hematoxylin  
(Blue) Comment: Color brown is the positive  
signal for bsm-60429R