

bs-4610R**[Primary Antibody]****phospho-AQP2 (Ser264+261) Rabbit pAb****Bioss**
ANTIBODIES

www.bioss.com.cn

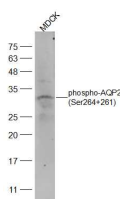
sales@bioss.com.cn

techsupport@bioss.com.cn

400-901-9800

— DATASHEET —

Host: Rabbit	Isotype: IgG	Applications: WB (1:500-2000)
Clonality: Polyclonal		Reactivity: Dog (predicted: Human, Mouse, Rat, Pig, Sheep, Cow, Chicken)
GeneID: 359	SWISS: P41181	Predicted MW.: 30 kDa
Target: AQP2 (Ser264+261)		Subcellular Location: Cell membrane ,Cytoplasm
Immunogen: KLH conjugated synthesised phosphopeptide derived from human AQP2 around the phosphorylation site of Ser264/261: LH(p-S)PQ(p-S)LP. < Cytoplasmic >		
Purification: affinity purified by Protein A		
Concentration: 1mg/ml		
Storage: 0.01M TBS (pH7.4) with 1% BSA, 0.02% Proclin300 and 50% Glycerol. Shipped at 4°C. Store at -20°C for one year. Avoid repeated freeze/thaw cycles.		
Background: This gene encodes a water channel protein located in the kidney collecting tubule. It belongs to the MIP/aquaporin family, some members of which are clustered together on chromosome 12q13. Mutations in this gene have been linked to autosomal dominant, and recessive forms of nephrogenic diabetes insipidus. Belongs to the MIP/aquaporin (TC 1.A.8) family.		

— VALIDATION IMAGES —

Sample: MDCK(Dog) Cell Lysate at 30 ug Primary:
Anti-alpha smooth muscle Actin (bs-4610R) at
1/2000 dilution Secondary: IRDye800CW Goat
Anti-Rabbit IgG at 1/20000 dilution Predicted
band size: 30 kD Observed band size: 30 kD