

bs-12730R**[Primary Antibody]****PLK2 Rabbit pAb****Bioss**
ANTIBODIES

www.bioss.com.cn

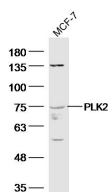
sales@bioss.com.cn

techsupport@bioss.com.cn

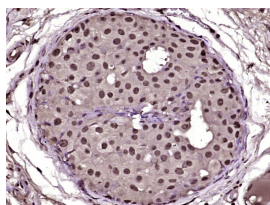
400-901-9800

— DATASHEET —

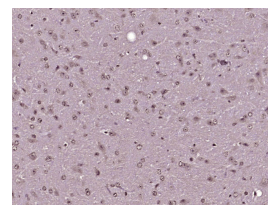
Host: Rabbit Clonality: Polyclonal GeneID: 10769 Target: PLK2 Immunogen: KLH conjugated synthetic peptide derived from human PLK2: 301-400/685. Purification: affinity purified by Protein A Concentration: 1mg/ml Storage: 0.01M TBS (pH7.4) with 1% BSA, 0.02% Proclin300 and 50% Glycerol. Shipped at 4°C. Store at -20°C for one year. Avoid repeated freeze/thaw cycles. Background: The protein encoded by this gene is a member of the polo family of serine/threonine protein kinases that have a role in normal cell division. This gene is most abundantly expressed in testis, spleen and fetal tissues, and its expression is inducible by serum, suggesting that it may also play an important role in cells undergoing rapid cell division. Alternatively spliced transcript variants encoding different isoforms have been found for this gene. [provided by RefSeq, Nov 2011]	Isotype: IgG SWISS: Q9NYY3	Applications: WB (1:500-2000) IHC-P (1:100-500) IHC-F (1:100-500) IF (1:100-500) Reactivity: Human, Mouse, Zebrafish (predicted: Rat, Pig, Sheep, Cow, Dog, Horse) Predicted MW.: 78 kDa Subcellular Location: Cytoplasm
---	---	---

— VALIDATION IMAGES —

Sample: MCF-7(Human) Cell Lysate at 40 ug
Primary: Anti-PLK2 (bs-12730R) at 1/300 dilution
Secondary: IRDye800CW Goat Anti-Rabbit IgG at 1/20000 dilution Predicted band size: 78 kD
Observed band size: 78 kD



Paraformaldehyde-fixed, paraffin embedded (Human breast carcinoma); Antigen retrieval by boiling in sodium citrate buffer (pH6.0) for 15min; Block endogenous peroxidase by 3% hydrogen peroxide for 20 minutes; Blocking buffer (normal goat serum) at 37°C for 30min; Antibody incubation with (PLK2) Polyclonal Antibody, Unconjugated (bs-12730R) at 1:400 overnight at 4°C, followed by operating according to SP Kit(Rabbit) (sp-0023) instructions and DAB staining.



Paraformaldehyde-fixed, paraffin embedded (Mouse brain); Antigen retrieval by boiling in sodium citrate buffer (pH6.0) for 15min; Block endogenous peroxidase by 3% hydrogen peroxide for 20 minutes; Blocking buffer (normal goat serum) at 37°C for 30min; Antibody incubation with (PLK2) Polyclonal Antibody, Unconjugated (bs-12730R) at 1:400 overnight at 4°C, followed by operating according to SP Kit(Rabbit) (sp-0023) instructions and DAB staining.

— SELECTED CITATIONS —

- **[IF=4.4]** Jiayi Luo. et al. Polo - like kinase2 regulates renal tubulointerstitial fibrosis via notch signaling pathway in diabetic kidney disease. the faseb journal. 2025 Mar 15;39(5):e70455. IHC ;Mouse. 40059448