

bs-7568R

[Primary Antibody]

RNF122 Rabbit pAb

Bioss
ANTIBODIES

www.bioss.com.cn

sales@bioss.com.cn

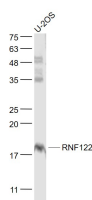
techsupport@bioss.com.cn

400-901-9800

— DATASHEET —

Host: Rabbit	Isotype: IgG	Applications: WB (1:500-2000)
Clonality: Polyclonal		Reactivity: Human, Rat (predicted: Mouse, Rabbit, Pig, Cow, Dog, Horse)
GeneID: 79845		Predicted MW.: 17 kDa
Target: RNF122		Subcellular Location: Cell membrane ,Cytoplasm
Immunogen: KLH conjugated synthetic peptide derived from human RNF122: 71-155/155.		
Purification: affinity purified by Protein A		
Concentration: 1mg/ml		
Storage: 0.01M TBS (pH7.4) with 1% BSA, 0.02% Proclin300 and 50% Glycerol. Shipped at 4°C. Store at -20°C for one year. Avoid repeated freeze/thaw cycles.		
Background: May induce necrosis and apoptosis. May play a role in cell viability.		

— VALIDATION IMAGES —



Sample: U-2OS(Human) Cell Lysate at 30 ug
Primary: Anti- RNF122 (bs-7568R) at 1/1000
dilution Secondary: IRDye800CW Goat Anti-
Rabbit IgG at 1/20000 dilution Predicted band
size: 17 kD Observed band size: 18 kD