

bs-16616R**[Primary Antibody]**

Integrin linked ILK Rabbit pAb

Bioss
ANTIBODIES

www.bioss.com.cn

sales@bioss.com.cn

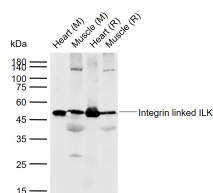
techsupport@bioss.com.cn

400-901-9800

— DATASHEET —

Host: Rabbit	Isotype: IgG	Applications: WB (1:500-2000)
Clonality: Polyclonal		Reactivity: Human, Mouse, Rat (predicted: Rabbit, Pig, Sheep, Cow, Dog, Horse)
GeneID: 3611	SWISS: Q13418	Predicted MW.: 51 kDa
Target: Integrin linked ILK		Subcellular Location: Cell membrane ,Cytoplasm
Immunogen: KLH conjugated synthetic peptide derived from human Integrin linked ILK: 301-400/452.		
Purification: affinity purified by Protein A		
Concentration: 1mg/ml		
Storage: 0.01M TBS (pH7.4) with 1% BSA, 0.02% Proclin300 and 50% Glycerol. Shipped at 4°C. Store at -20°C for one year. Avoid repeated freeze/thaw cycles.		
Background: The ILK protein is important in different biological pathways such as cell adhesion, anchorage-dependent cell cycle progression, oncogenic transformation, and growth factor signaling. The kinase activity of ILK is low in non-activated cells; its activity is stimulated by cell-ECM interactions and by certain growth factors. 3 Negative regulation of ILK is mediated by two phosphatases: PTEN, a tumor suppressor lipid sphatase, and ILKAP, a PP2C protein phosphatase. In tumor cells that do not express PTEN protein, ILK is constitutively active.		

— VALIDATION IMAGES —



Sample: Lane 1: Mouse Heart tissue lysates Lane 2: Mouse Muscle tissue lysates Lane 3: Rat Heart tissue lysates Lane 4: Rat Muscle tissue lysates
Primary: Anti-Integrin linked ILK (bs-16616R) at 1/1000 dilution Secondary: IRDye800CW Goat Anti-Rabbit IgG at 1/20000 dilution Predicted band size: 51 kDa Observed band size: 51 kDa