

bs-5653R**[Primary Antibody]****Bioss**
ANTIBODIES

www.bioss.com.cn

sales@bioss.com.cn

techsupport@bioss.com.cn

400-901-9800

phospho-Rb (Ser612) Rabbit pAb**— DATASHEET —**

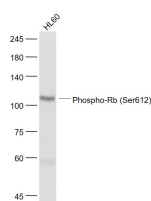
Host: Rabbit	Isotype: IgG
Clonality: Polyclonal	
GeneID: 5925	SWISS: P06400
Target: Rb (Ser612)	
Immunogen: KLH conjugated Synthesised phosphopeptide derived from human Rb around the phosphorylation site of Ser612: VR(p-S)PK.	
Purification: affinity purified by Protein A	
Concentration: 1mg/ml	
Storage: 0.01M TBS (pH7.4) with 1% BSA, 0.02% Proclin300 and 50% Glycerol. Shipped at 4°C. Store at -20°C for one year. Avoid repeated freeze/thaw cycles.	
Background: The protein encoded by this gene is a negative regulator of the cell cycle and was the first tumor suppressor gene found. The encoded protein also stabilizes constitutive heterochromatin to maintain the overall chromatin structure. The active, hypophosphorylated form of the protein binds transcription factor E2F1. Defects in this gene are a cause of childhood cancer retinoblastoma (RB), bladder cancer, and osteogenic sarcoma. Rb is a tumor suppressor gene which functions as a negative regulator of the cell cycle by interacting with transcription factors including E2F1, PU1, ATF2, UBF, Elf1 and cAbl. This ability of Rb to alter transcription is regulated by phosphorylation catalyzed by the cyclin dependent protein kinases (cdks). Rb is phosphorylated on serine and threonine, but not on tyrosine residues. It forms a complex with SV40 large T antigen, adenovirus E1A, and human papilloma virus 16E. Rb protein may act by regulating transcription and loss of its function leads to uncontrolled cell growth. Aberrations in the Rb gene have been implicated in cancers of breast, colon, prostate, kidney, nasopharynx, and leukemia.	

Applications: **WB** (1:500-2000)
IHC-P (1:100-500)
IHC-F (1:100-500)
IF (1:100-500)

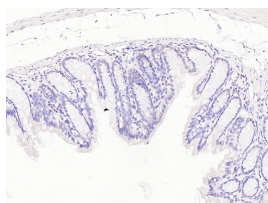
Reactivity: Human, Mouse
(predicted: Rat, Sheep, Cow, Chicken, Dog, Horse)

Predicted MW.: 102 kDa

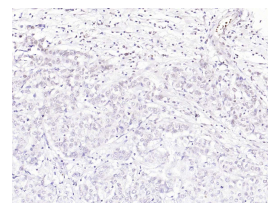
Subcellular Location: Nucleus

— VALIDATION IMAGES —

Sample: HL60(Human) Cell Lysate at 30 ug
Primary: Anti- Phospho-Rb (Ser612) (bs-5653R)
at 1/1000 dilution Secondary: IRDye800CW Goat
Anti-Rabbit IgG at 1/20000 dilution Predicted
band size: 102 kD Observed band size: 102 kD



Paraformaldehyde-fixed, paraffin embedded
(mouse colon); Antigen retrieval by boiling in
sodium citrate buffer (pH6.0) for 15min; Block
endogenous peroxidase by 3% hydrogen
peroxide for 20 minutes; Blocking buffer (normal
goat serum) at 37°C for 30min; Antibody
incubation with (Phospho-Rb (Ser612))
Polyclonal Antibody, Unconjugated (bs-5653R)
at 1:200 overnight at 4°C, followed by operating
according to SP Kit(Rabbit) (sp-0023)
instructions and DAB staining.



Paraformaldehyde-fixed, paraffin embedded
(human breast carcinoma); Antigen retrieval by
boiling in sodium citrate buffer (pH6.0) for
15min; Block endogenous peroxidase by 3%
hydrogen peroxide for 20 minutes; Blocking
buffer (normal goat serum) at 37°C for 30min;
Antibody incubation with (Phospho-Rb (Ser612))
Polyclonal Antibody, Unconjugated (bs-5653R)
at 1:200 overnight at 4°C, followed by operating
according to SP Kit(Rabbit) (sp-0023)
instructions and DAB staining.