

bsm-52749R**[Primary Antibody]****BioSS**
ANTIBODIES

www.bioss.com.cn

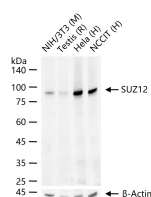
sales@bioss.com.cn

techsupport@bioss.com.cn

400-901-9800

SUZ12 Recombinant Rabbit mAb**— DATASHEET —**

Host: Rabbit	Isotype: IgG	Applications: WB (1:500-2000) Reactivity: Human, Mouse, Rat Predicted MW.: 83 kDa Subcellular Location: Nucleus
Clonality: Recombinant	CloneNo.: 3C1	
GeneID: 23512	SWISS: Q15022	
Target: SUZ12		
Immunogen: A synthesized peptide derived from human SUZ12: 41-96.		
Purification: affinity purified by Protein A		
Concentration: 1mg/ml		
Storage: 0.01M TBS (pH7.4) with 1% BSA, 0.02% Proclin300 and 50% Glycerol. Store at -20°C for one year. Avoid repeated freeze/thaw cycles. The lyophilized antibody is stable at room temperature for at least one month and for greater than a year when kept at -20°C. When reconstituted in sterile pH 7.4 0.01M PBS or diluent of antibody the antibody is stable for at least two weeks at 2-4°C.		
Background: UZ12 is a polycomb group (PcG) protein. PcG proteins act by forming multiprotein complexes, which are required to maintain the transcriptionally repressive state of homeotic genes throughout development. PcG proteins are not required to initiate repression, but to maintain it during later stages of development. They probably act via the methylation of histones, rendering chromatin heritably changed in its expressibility. SUZ12 is a component of the PRC2 complex, which methylates Lys-9 and Lys-27 residues of histone H3. SUZ12 is a component of the PRC2 complex, composed of EED, EZH2, SUZ12/JJAZ1, RBBP4 and RBBP7. This complex is distinct from the PRC1 complex, which contains many other PcG proteins like BMI1, CBX4, CBX8, PHC2, PHC3, SCMH1, RING1 and RNF2. SUZ12 mRNA is upregulated in a number of tumors including breast and colon.		

— VALIDATION IMAGES —

25 ug total protein per lane of various lysates (see on figure) probed with SUZ12 monoclonal antibody, unconjugated (bsm-52749R) at 1:1000 dilution and 4°C overnight incubation. Followed by conjugated secondary antibody incubation at r.t. for 60 min.