

**bs-8326R****[ Primary Antibody ]****Bioss**  
ANTIBODIES

www.bioss.com.cn

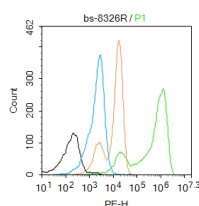
sales@bioss.com.cn

techsupport@bioss.com.cn

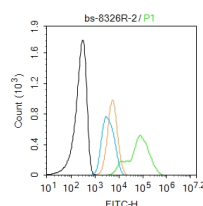
400-901-9800

**Hi95 Rabbit pAb****DATASHEET**

<b>Host:</b> Rabbit	<b>Isotype:</b> IgG	<b>Applications:</b> Flow-Cyt (2ug/Test)
<b>Clonality:</b> Polyclonal		<b>Reactivity:</b> Human (predicted: Mouse, Rat, Rabbit, Pig, Sheep, Cow, Dog, Horse)
<b>GeneID:</b> 83667	<b>SWISS:</b> P58004	<b>Predicted MW.:</b> 54 kDa
<b>Target:</b> Hi95		<b>Subcellular Location:</b> Cytoplasm ,Nucleus
<b>Immunogen:</b> KLH conjugated synthetic peptide derived from human SESN2/Hi95: 101-200/480.		
<b>Purification:</b> affinity purified by Protein A		
<b>Concentration:</b> 1mg/ml		
<b>Storage:</b> 0.01M TBS (pH7.4) with 1% BSA, 0.02% Proclin300 and 50% Glycerol. Shipped at 4°C. Store at -20°C for one year. Avoid repeated freeze/thaw cycles.		
<b>Background:</b> SESN2 is a member of the sestrin family of PA26-related proteins. The It may function in the regulation of cell growth and survival and also in cellular response to different stress conditions.		

**VALIDATION IMAGES**

Blank control:K562. Primary Antibody (green line): Rabbit Anti-Hi95 antibody (bs-8326R) Dilution: 2 $\mu$ g /10<sup>6</sup> cells; Isotype Control Antibody (orange line): Rabbit IgG . Secondary Antibody : Goat anti-rabbit IgG-PE Dilution: 1 $\mu$ g /test. Protocol The cells were fixed with 4% PFA (10min at room temperature)and then permeabilized with 90% ice-cold methanol for 20 min at -20°C. The cells were then incubated in 5%BSA to block non-specific protein-protein interactions for 30 min at room temperature .Cells stained with Primary Antibody for 30 min at room temperature. The secondary antibody used for 40 min at room temperature. Acquisition of 20,000 events was performed.



Blank control: K562. Primary Antibody (green line): Rabbit Anti-Hi95 antibody (bs-8326R) Dilution: 2 $\mu$ g /10<sup>6</sup> cells; Isotype Control Antibody (orange line): Rabbit IgG . Secondary Antibody : Goat anti-rabbit IgG-AF488 Dilution: 1 $\mu$ g /test. Protocol The cells were fixed with 4% PFA (10min at room temperature)and then permeabilized with 90% ice-cold methanol for 20 min at -20°C. The cells were then incubated in 5%BSA to block non-specific protein-protein interactions for 30 min at at room temperature .Cells stained with Primary Antibody for 30 min at room temperature. The secondary antibody used for 40 min at room temperature. Acquisition of 20,000 events was performed.

**SELECTED CITATIONS**

- **[IF=3.7]** Wei Yu. et al. Glucose promotes cell growth and casein synthesis via ATF4/Nrf2-Sestrin2- AMPK-mTORC1 pathway in dairy cow mammary epithelial cells. ANIM BIOTECHNOL. 2023 Jul 12 WB ;Bovine. 37435839
- **[IF=4.1]** Liu Yifan. et al. Leu promotes C2C12 cell differentiation by regulating the GSK3 $\beta$ / $\beta$ -catenin signaling pathway through facilitating the interaction between SESN2 and RPN2. J SCI FOOD AGR. 2024 Mar;; WB ;Mouse. 38551359
- **[IF=2.7]** Tingting Li. et al.Machine Learning Identify Ferroptosis-Related Genes as Potential Diagnostic Biomarkers for Gastric Intestinal Metaplasia.technology in cancer research & treatment.2024 Jan-Dec:23:15330338241272036. IHC ;Human. 39169865

Important Note: This product as supplied is intended for research use only, not for use in human, therapeutic or diagnostic applications.