

bs-23498R**[Primary Antibody]****Bioss**
ANTIBODIES

www.bioss.com.cn

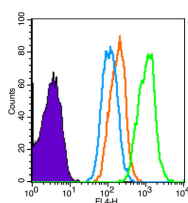
sales@bioss.com.cn

techsupport@bioss.com.cn

400-901-9800

CD1E Rabbit pAb**— DATASHEET —**

Host: Rabbit Clonality: Polyclonal GeneID: 913 Target: CD1E Immunogen: KLH conjugated synthetic peptide derived from human CD1E: 301-388/388. Purification: affinity purified by Protein A Concentration: 1mg/ml Storage: 0.01M TBS (pH7.4) with 1% BSA, 0.02% Proclin300 and 50% Glycerol. Shipped at 4°C. Store at -20°C for one year. Avoid repeated freeze/thaw cycles. Background: This gene encodes a member of the CD1 family of transmembrane glycoproteins, which are structurally related to the major histocompatibility complex (MHC) proteins and form heterodimers with beta-2-microglobulin. The CD1 proteins mediate the presentation of primarily lipid and glycolipid antigens of self or microbial origin to T cells. The human genome contains five CD1 family genes organized in a cluster on chromosome 1. The CD1 family members are thought to differ in their cellular localization and specificity for particular lipid ligands. The protein encoded by this gene localizes within Golgi compartments, endosomes, and lysosomes, and is cleaved into a stable soluble form. The soluble form is required for the intracellular processing of some glycolipids into a form that can be presented by other CD1 family members. Many alternatively spliced transcript variants encoding different isoforms have been described. Additional transcript variants have been found; however, their biological validity has not been determined. [provided by RefSeq, Jun 2010]	Isotype: IgG SWISS: P15812 Applications: Flow-Cyt (1ug/Test) Reactivity: Human Predicted MW.: 42 kDa Subcellular Location: Cell membrane
---	---

— VALIDATION IMAGES —

Blank control (Black line): Molt-4 (Black).

Primary Antibody (green line): Rabbit Anti-CD1E

antibody (bs-23498R) Dilution: 1µg /10⁶ cells;

Isotype Control Antibody (orange line): Rabbit

IgG . Secondary Antibody (white blue line): Goat

anti-rabbit IgG-AF647 Dilution: 1µg /test.

Protocol The cells were fixed with 4% PFA

(10min at room temperature) and then

permeabilized with PBST for 20 min at room

temperature. The cells were then incubated in

5% BSA to block non-specific protein-protein

interactions for 30 min at room temperature

.Cells stained with Primary Antibody for 30 min

at room temperature. The secondary antibody

used for 40 min at room temperature.

Acquisition of 20,000 events was performed.

Important Note: This product as supplied is intended for research use only, not for use in human, therapeutic or diagnostic applications.