

bs-6407R**[Primary Antibody]****CHCHD2 Rabbit pAb****BioSS**
ANTIBODIES

www.bioss.com.cn

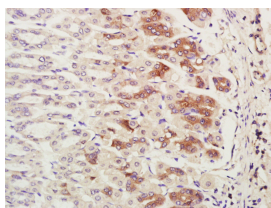
sales@bioss.com.cn

techsupport@bioss.com.cn

400-901-9800

— DATASHEET —

Host: Rabbit	Isotype: IgG	Applications: IHC-P (1:100-200) IHC-F (1:100-200) IF (1:100-500) Reactivity: Mouse (predicted: Human, Rat, Rabbit, Pig, Chicken, Dog, GuineaPig, Horse) Predicted MW.: 12 kDa Subcellular Location: Cytoplasm
Clonality: Polyclonal		
GeneID: 51142	SWISS: Q498C3	
Target: CHCHD2		
Immunogen: KLH conjugated synthetic peptide derived from human CHCHD2: 96-130/151.		
Purification: affinity purified by Protein A		
Concentration: 1mg/ml		
Storage: 0.01M TBS (pH7.4) with 1% BSA, 0.02% Proclin300 and 50% Glycerol. Shipped at 4°C. Store at -20°C for one year. Avoid repeated freeze/thaw cycles.		

— VALIDATION IMAGES —

Paraformaldehyde-fixed, paraffin embedded (Mouse stomach); Antigen retrieval by boiling in sodium citrate buffer (pH6.0) for 15min; Block endogenous peroxidase by 3% hydrogen peroxide for 20 minutes; Blocking buffer (normal goat serum) at 37°C for 30min; Antibody incubation with (CHCHD2) Polyclonal Antibody, Unconjugated (bs-6407R) at 1:400 overnight at 4°C, followed by a conjugated secondary antibody (sp-0023) for 20 minutes and DAB staining.