

**bs-16861R****[ Primary Antibody ]****KTEL1 Rabbit pAb****BioSS**  
**ANTIBODIES**

www.bioss.com.cn

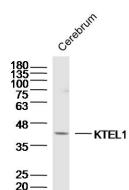
sales@bioss.com.cn

techsupport@bioss.com.cn

400-901-9800

**— DATASHEET —**

<b>Host:</b> Rabbit	<b>Isotype:</b> IgG	<b>Applications:</b> WB (1:500-2000)
<b>Clonality:</b> Polyclonal		
<b>GeneID:</b> 56983	<b>SWISS:</b> Q8NBL1	
<b>Target:</b> KTEL1		
<b>Immunogen:</b> KLH conjugated synthetic peptide derived from human KTEL1: 201-300/392.		
<b>Purification:</b> affinity purified by Protein A		<b>Reactivity:</b> Mouse (predicted: Human, Rat, Rabbit, Sheep, Cow, Dog, Horse)
<b>Concentration:</b> 1mg/ml		<b>Predicted MW.:</b> 43 kDa
<b>Storage:</b> 0.01M TBS (pH7.4) with 1% BSA, 0.02% Proclin300 and 50% Glycerol. Shipped at 4°C. Store at -20°C for one year. Avoid repeated freeze/thaw cycles.		<b>Subcellular Location:</b> Cytoplasm
<b>Background:</b> CLP46 is a KTEL motif-containing protein that belongs to the CAP10 family. The KTEL motif at the C-terminus of CLP46 is an endoplasmic reticulum (ER) retention signal which localizes the CLP46 protein to the lumen of the ER. CLP46 is thought to promote cell proliferation and is also believed to be involved with hepatic functions. The Drosophila protein rumi, a CAP10 protein and likely similar in function to CLP46, uses glucosylation to act as a Notch signaling regulator. Expressed in varying degrees in most adult tissue, CLP46 is especially abundant in the liver. CLP46 is not expressed in detectable levels in colon, thymus or small intestine. Human CLP46 shares 94% and 91% sequence similarity with its bovine and mouse homologs, respectively.		

**— VALIDATION IMAGES —**

Sample: Cerebrum (Mouse) Lysate at 40 ug  
Primary: Anti-KTEL1 (bs-16861R) at 1/300  
dilution Secondary: IRDye800CW Goat Anti-  
Rabbit IgG at 1/20000 dilution Predicted band  
size: 43 kD Observed band size: 43 kD