

bs-16857R**[Primary Antibody]****KRT83 Rabbit pAb****BioSS**
ANTIBODIES

www.bioss.com.cn

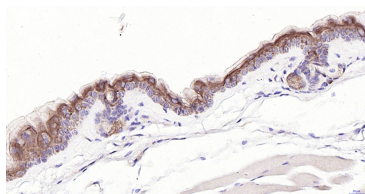
sales@bioss.com.cn

techsupport@bioss.com.cn

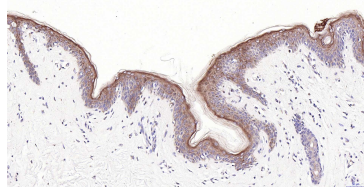
400-901-9800

— DATASHEET —

Host: Rabbit	Isotype: IgG	Applications: IHC-P (1:100-500) IHC-F (1:100-500) IF (1:100-500)
Clonality: Polyclonal		
GeneID: 3889	SWISS: P78385	
Target: KRT83		
Immunogen: KLH conjugated synthetic peptide derived from human KRT83: 281-380/493.		
Purification: affinity purified by Protein A		Reactivity: Human, Mouse, Rat (predicted: Sheep, Cow)
Concentration: 1mg/ml		Predicted MW.: 54 kDa
Storage: 0.01M TBS (pH7.4) with 1% BSA, 0.02% Proclin300 and 50% Glycerol. Shipped at 4°C. Store at -20°C for one year. Avoid repeated freeze/thaw cycles.		Subcellular Location: Secreted ,Extracellular matrix ,Cytoplasm
Background: This gene encodes a member of the keratin gene family. This gene is one of multiple type I hair keratin genes that are clustered in a region of chromosome 17q12-q21 and have the same direction of transcription. As a type I hair keratin, the encoded protein is an acidic protein which heterodimerizes with type II keratins to form hair and nails. There are two isoforms of this protein, encoded by two separate genes, keratin 33A and keratin 33B. [provided by RefSeq, May 2012]		

— VALIDATION IMAGES —

Paraformaldehyde-fixed, paraffin embedded Mouse Skin; Antigen retrieval by boiling in sodium citrate buffer (pH6.0) for 15 min; Antibody incubation with KRT83 Polyclonal Antibody, Unconjugated (bs-16857R) at 1:200 overnight at 4°C, followed by conjugation to the SP Kit (Rabbit, SP-0023) and DAB (C-0010) staining.



Paraformaldehyde-fixed, paraffin embedded Human Skin; Antigen retrieval by boiling in sodium citrate buffer (pH6.0) for 15 min; Antibody incubation with KRT83 Polyclonal Antibody, Unconjugated (bs-16857R) at 1:200 overnight at 4°C, followed by conjugation to the SP Kit (Rabbit, SP-0023) and DAB (C-0010) staining.