

**bs-6900R**

**[ Primary Antibody ]**

## BOD1 Rabbit pAb

**Bioss**  
ANTIBODIES

www.bioss.com.cn

sales@bioss.com.cn

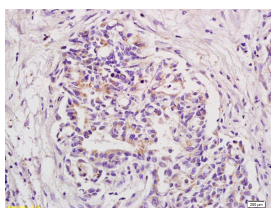
techsupport@bioss.com.cn

400-901-9800

### — DATASHEET —

<b>Host:</b> Rabbit	<b>Isotype:</b> IgG	<b>Applications:</b> IHC-P (1:100-500) IHC-F (1:100-500) IF (1:100-500)
<b>Clonality:</b> Polyclonal		
<b>GeneID:</b> 91272		
<b>Target:</b> BOD1		<b>Reactivity:</b> Rat (predicted: Human, Mouse, Rabbit, Pig, Cow, Chicken, Dog)
<b>Immunogen:</b> KLH conjugated synthetic peptide derived from human BOD1: 51-150/185.		
<b>Purification:</b> affinity purified by Protein A		<b>Predicted MW.:</b> 20 kDa
<b>Concentration:</b> 1mg/ml		<b>Subcellular Location:</b> Cytoplasm ,Nucleus
<b>Storage:</b> 0.01M TBS (pH7.4) with 1% BSA, 0.02% Proclin300 and 50% Glycerol. Shipped at 4°C. Store at -20°C for one year. Avoid repeated freeze/thaw cycles.		
<b>Background:</b> Required for proper chromosome biorientation through the detection or correction of syntelic attachments in mitotic spindles.		

### — VALIDATION IMAGES —



Tissue/cell: rat brain tissue; 4% Paraformaldehyde-fixed and paraffin-embedded; Antigen retrieval: citrate buffer (0.01M, pH 6.0), Boiling bathing for 15min; Block endogenous peroxidase by 3% Hydrogen peroxide for 30min; Blocking buffer (normal goat serum, C-0005) at 37°C for 20 min; Incubation: Anti-BOD1 Polyclonal Antibody, Unconjugated(bs-6900R) 1:200, overnight at 4°C, followed by conjugation to the secondary antibody(SP-0023) and DAB(C-0010) staining