

MARCH4 Rabbit pAb

Catalog Number: bs-9338R

Target Protein: MARCH4

Concentration: 1mg/ml

Form: Liquid

Host: Rabbit

Clonality: Polyclonal

Isotype: IgG

Applications: WB (1:500-2000)

Reactivity: Human (predicted: Mouse, Rat, Rabbit, Pig, Sheep, Cow, Chicken, Dog, Horse)

Predicted MW: 43 kDa

Entrez Gene: 57574

Swiss Prot: Q9P2E8

Source: KLH conjugated synthetic peptide derived from human MARCH4: 261-360/410.

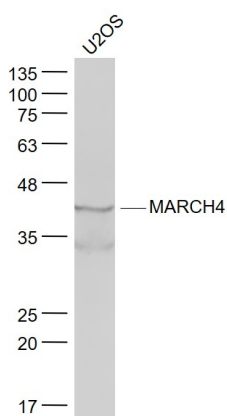
Purification: affinity purified by Protein A

Storage: 0.01M TBS (pH7.4) with 1% BSA, 0.02% Proclin300 and 50% Glycerol.

Shipped at 4°C. Store at -20°C for one year. Avoid repeated freeze/thaw cycles.

Background: MARCH4, an E3 ubiquitin protein ligase, may mediate ubiquitination of MHC I and CD4, and promote their subsequent endocytosis and sorting to lysosomes via multivesicular bodies. E3 ubiquitin protein ligases accept ubiquitin from an E2 ubiquitin conjugating enzyme in the form of a thioester and then directly transfer the ubiquitin to targeted substrates.

VALIDATION IMAGES



Sample: U2OS(Human) Cell Lysate at 30 ug Primary: Anti- MARCH4 (bs-9338R) at 1/1000 dilution Secondary: IRDye800CW Goat Anti-Rabbit IgG at 1/20000 dilution Predicted band size: 43 kD Observed band size: 43 kD