

bs-8184R**[Primary Antibody]****AVSD2 Rabbit pAb****Bioss**
ANTIBODIES

www.bioss.com.cn

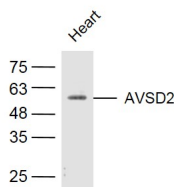
sales@bioss.com.cn

techsupport@bioss.com.cn

400-901-9800

— DATASHEET —

Host: Rabbit	Isotype: IgG	Applications: WB (1:500-2000)
Clonality: Polyclonal		
GeneID: 78987	SWISS: Q96HD1	
Target: AVSD2		
Immunogen: KLH conjugated synthetic peptide derived from human COMTD1: 51-150/262.		
Purification: affinity purified by Protein A		Reactivity: Mouse (predicted: Human, Rat, Rabbit, Cow, Dog, Horse)
Concentration: 1mg/ml		Predicted MW.: 45 kDa
Storage: 0.01M TBS (pH7.4) with 1% BSA, 0.02% Proclin300 and 50% Glycerol. Shipped at 4°C. Store at -20°C for one year. Avoid repeated freeze/thaw cycles.		Subcellular Location: Cell membrane
Background: This gene encodes a member of a subfamily of epidermal growth factor-related proteins. The encoded protein is characterized by a cysteine-rich with epidermal growth factor-like domain. This protein may function as a cell adhesion molecule. Mutations in this gene are the cause of atrioventricular septal defect. Alternate splicing results in multiple transcript variants.[provided by RefSeq, Apr 2010]		

— VALIDATION IMAGES —

Sample: Heart (Mouse) Lysate at 40 ug Primary:

Anti-AVSD2 (bs-8184R) at 1/300 dilution

Secondary: IRDye800CW Goat Anti-Rabbit IgG at

1/20000 dilution Predicted band size: 45 kD

Observed band size: 55 kD