

**bs-22928R****[ Primary Antibody ]****Bak Rabbit pAb****Bioss**  
**ANTIBODIES**

www.bioss.com.cn

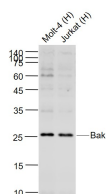
sales@bioss.com.cn

techsupport@bioss.com.cn

400-901-9800

**— DATASHEET —**

<b>Host:</b> Rabbit <b>Clonality:</b> Polyclonal <b>GeneID:</b> 578 <b>Target:</b> Bak <b>Immunogen:</b> KLH conjugated synthetic peptide derived from human Bak: 71-171/211. <b>Purification:</b> affinity purified by Protein A <b>Concentration:</b> 1mg/ml <b>Storage:</b> 0.01M TBS (pH7.4) with 1% BSA, 0.02% Proclin300 and 50% Glycerol. Shipped at 4°C. Store at -20°C for one year. Avoid repeated freeze/thaw cycles. <b>Background:</b> The protein encoded by this gene belongs to the BCL2 protein family. BCL2 family members form oligomers or heterodimers and act as anti- or pro-apoptotic regulators that are involved in a wide variety of cellular activities. This protein localizes to mitochondria, and functions to induce apoptosis. It interacts with and accelerates the opening of the mitochondrial voltage-dependent anion channel, which leads to a loss in membrane potential and the release of cytochrome c. This protein also interacts with the tumor suppressor P53 after exposure to cell stress. [provided by RefSeq, Jul 2008]	<b>Isotype:</b> IgG  <b>SWISS:</b> Q16611	<b>Applications:</b> WB (1:500-2000)  <b>Reactivity:</b> Human  <b>Predicted MW.:</b> 23 kDa  <b>Subcellular Location:</b> Cell membrane ,Cytoplasm
---	---	---

**— VALIDATION IMAGES —**

Sample: Lane 1: Molt-4 (Human) Cell Lysate at 30 ug  
Lane 2: Jurkat (Human) Cell Lysate at 30 ug  
Primary: Anti-Bak (bs-22928R) at 1/1000 dilution  
Secondary: IRDye800CW Goat Anti-Rabbit IgG at 1/20000 dilution  
Predicted band size: 23 kD  
Observed band size: 25 kD

**— SELECTED CITATIONS —**

- **[IF=7.963]** Jianzhao Liao. et al. Gut microbiota disturbance exaggerates battery wastewater-induced hepatotoxicity through a gut-liver axis. Sci Total Environ. 2022 Feb;809:152188 WB ;Mouse. 34875328