

bs-16565R**[Primary Antibody]****TRAM1 Rabbit pAb****Bioss**
ANTIBODIES

www.bioss.com.cn

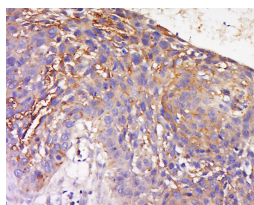
sales@bioss.com.cn

techsupport@bioss.com.cn

400-901-9800

— DATASHEET —

Host: Rabbit	Isotype: IgG	Applications: IHC-P (1:100-500) IHC-F (1:100-500) IF (1:100-500) Reactivity: Human (predicted: Mouse, Rat, Rabbit, Pig, Sheep, Cow, Dog, Horse) Predicted MW.: 43 kDa Subcellular Location: Cytoplasm
Clonality: Polyclonal		
GeneID: 23471	SWISS: Q15629	
Target: TRAM1		
Immunogen: KLH conjugated synthetic peptide derived from human TRAM1: 61-160/374.		
Purification: affinity purified by Protein A		
Concentration: 1mg/ml		
Storage: 0.01M TBS (pH7.4) with 1% BSA, 0.02% Proclin300 and 50% Glycerol. Shipped at 4°C. Store at -20°C for one year. Avoid repeated freeze/thaw cycles.		
Background: TRAM1 belongs to the TRAM family. It stimulates or is required for the translocation of secretory proteins across the endoplasmic reticulum membrane.		

— VALIDATION IMAGES —

Tissue/cell: Human lung carcinoma; 4% Paraformaldehyde-fixed and paraffin-embedded; Antigen retrieval: citrate buffer (0.01M, pH 6.0), Boiling bathing for 15min; Block endogenous peroxidase by 3% Hydrogen peroxide for 30min; Blocking buffer (normal goat serum, C-0005) at 37°C for 20 min; Incubation: Anti-TRAM1 Polyclonal Antibody, Unconjugated(bs-16565R) 1:200, overnight at 4°C, followed by conjugation to the secondary antibody(SP-0023) and DAB(C-0010) staining