

bs-16619R

[Primary Antibody]

IME1 Rabbit pAb

Bioss
ANTIBODIES

www.bioss.com.cn

sales@bioss.com.cn

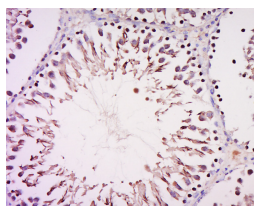
techsupport@bioss.com.cn

400-901-9800

— DATASHEET —

Host: Rabbit	Isotype: IgG	Applications: IHC-P (1:100-500)
Clonality: Polyclonal		IHC-F (1:100-500)
Target: IME1		IF (1:100-500)
Immunogen: KLH conjugated synthetic peptide derived from Saccharomyces cerevisiae IME1: 301-360/360.		Reactivity: Rat (predicted: Saccharomyces cerevisiae)
Purification: affinity purified by Protein A		
Concentration: 1mg/ml		Predicted MW.: 42 kDa
Storage: 0.01M TBS (pH7.4) with 1% BSA, 0.02% Proclin300 and 50% Glycerol. Shipped at 4°C. Store at -20°C for one year. Avoid repeated freeze/thaw cycles.		Subcellular Location: Nucleus
Background: Meiosis-inducing protein (IME1) is a master regulator of meiosis that is active only during meiotic events, activates transcription of early meiotic genes through interaction with Ume6p, degraded by the 26S proteasome following phosphorylation by Ime2p. IME1 is required for sporulation and for early sporulation-specific genes expression. It is a positive regulator of SME1/IME2 expression.		

— VALIDATION IMAGES —



Tissue/cell: Rat testis tissue; 4% Paraformaldehyde-fixed and paraffin-embedded; Antigen retrieval: citrate buffer (0.01M, pH 6.0), Boiling bathing for 15min; Block endogenous peroxidase by 3% Hydrogen peroxide for 30min; Blocking buffer (normal goat serum, C-0005) at 37°C for 20 min; Incubation: Anti-IME1 Polyclonal Antibody, Unconjugated(bs-16619R) 1:500, overnight at 4°C, followed by conjugation to the secondary antibody(SP-0023) and DAB(C-0010) staining