

bs-16522R

[Primary Antibody]

ZNF671 Rabbit pAb

BioSS
ANTIBODIES

www.bioss.com.cn

sales@bioss.com.cn

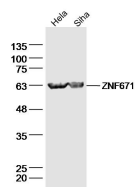
techsupport@bioss.com.cn

400-901-9800

— DATASHEET —

Host: Rabbit	Isotype: IgG	Applications: WB (1:500-2000)
Clonality: Polyclonal		Reactivity: Human
GeneID: 79891	SWISS: Q8TAW3	
Target: ZNF671		
Immunogen: KLH conjugated synthetic peptide derived from human ZNF671: 101-200/543.		Predicted MW.: 61 kDa
Purification: affinity purified by Protein A		Subcellular Location: Nucleus
Concentration: 1mg/ml		
Storage: 0.01M TBS (pH7.4) with 1% BSA, 0.02% Proclin300 and 50% Glycerol. Shipped at 4°C. Store at -20°C for one year. Avoid repeated freeze/thaw cycles.		

— VALIDATION IMAGES —



Sample: Hela(human) Cell Lysate at 40 ug
Siha(human) Cell Lysate at 40 ug Primary: Anti-ZNF671 (bs-16522R) at 1/300 dilution Secondary: IRDye800CW Goat Anti-Rabbit IgG at 1/20000 dilution Predicted band size: 61 kD Observed band size: 61 kD