

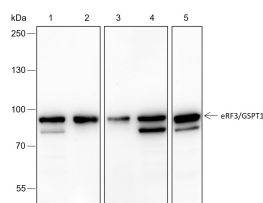
**bsm-60585R****[ Primary Antibody ]****eGF3/GSPT1 Recombinant Rabbit mAb****BioSS**  
**ANTIBODIES**

www.bioss.com.cn

sales@bioss.com.cn

techsupport@bioss.com.cn

400-901-9800

**— DATASHEET —****Host:** Rabbit**Isotype:** IgG**Clonality:** Recombinant**CloneNo.:** H5G9**Target:** eGF3/GSPT1**Purification:** affinity purified by Protein A**Concentration:** 1mg/ml**Storage:** 0.01M TBS (pH7.4) with 1% BSA, 0.02% Proclin300 and 50% Glycerol.  
Shipped at 4°C. Store at -20°C for one year. Avoid repeated freeze/thaw cycles.**Background:** eRF3a is a 499 amino acid protein that belongs to the GTP-binding elongation factor family and is involved in the regulation of cell growth, specifically via control of translation termination. Human eRF3a shares 94% sequence identity with its mouse counterpart, suggesting a conserved function between species. The gene encoding eRF3a maps to human chromosome 16, which encodes over 900 genes and comprises nearly 3% of the human genome. The GAN gene is located on chromosome 16 and, with mutation, may lead to giant axonal neuropathy, a nervous system disorder characterized by increasing malfunction with growth. The rare disorder Rubinstein-Taybi syndrome is also associated with chromosome 16, as is Crohn's disease, which is a gastrointestinal inflammatory condition.**Applications:** WB (1:500-1:2000)**Reactivity:** Human (predicted: Mouse, Rat)**Subcellular Location:** Cytoplasm**— VALIDATION IMAGES —**

Blocking buffer: 5% NFDM/TBST Primary ab  
dilution: 1:2000 Primary ab incubation  
condition: 2 hours at room temperature  
Secondary ab: Goat Anti-Rabbit IgG H&L (HRP)  
Lysate: 1: T47D, 2: PC-3, 3: COS-7, 4: NIH-3T3, 5:  
PC-12 Protein loading quantity: 20 µg Exposure  
time: 60 s Predicted MW: 56 kDa Observed MW:  
80 kDa