

bsm-60588R**[Primary Antibody]****Bioss**
ANTIBODIES

www.bioss.com.cn

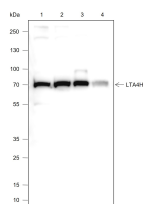
sales@bioss.com.cn

techsupport@bioss.com.cn

400-901-9800

LTA4H Recombinant Rabbit mAb**— DATASHEET —****Host:** Rabbit**Isotype:** IgG/Kappa**Clonality:** Recombinant**CloneNo.:** H10D6**Target:** LTA4H**Purification:** affinity purified by Protein A**Concentration:** 1mg/ml**Storage:** 0.01M TBS (pH7.4) with 1% BSA, 0.02% Proclin300 and 50% Glycerol.

Shipped at 4°C. Store at -20°C for one year. Avoid repeated freeze/thaw cycles.

Background: Leukotrienes are a group of bioactive compounds which play important roles in immediate hypersensitivity reactions and inflammation. Leukotriene A4 hydrolase hydrolyzes an epoxide moiety of leukotriene A4 (LTA4) to form leukotriene B4 (LTB4). The enzyme also has some peptidase activity.**Applications:** WB (1:500-1:1000)**Reactivity:** Human (predicted: Mouse, Rat)**Subcellular Location:** Cytoplasm**— VALIDATION IMAGES —**

Blocking buffer: 5% NFDm/TBST Primary Ab
dilution: 1:1000 Primary Ab incubation
condition: 2 hours at room temperature
Secondary Ab: Goat Anti-Rabbit IgG H&L (HRP)
Lysate: 1: HeLa, 2: HEK-293, 3: Mouse spleen, 4:
PC-12 Protein loading quantity: 20 µg Exposure
time: 30 s Predicted MW: 69 kDa Observed MW:
70 kDa