

bs-20098R**[Primary Antibody]****PRPF4 Rabbit pAb****BioSS**
ANTIBODIES

www.bioss.com.cn

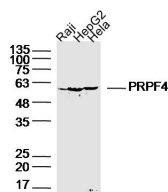
sales@bioss.com.cn

techsupport@bioss.com.cn

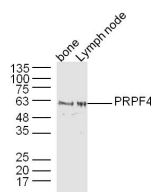
400-901-9800

— DATASHEET —

Host: Rabbit	Isotype: IgG	Applications: WB (1:500-2000)
Clonality: Polyclonal		Reactivity: Human, Mouse (predicted: Rat, Rabbit, Pig, Sheep, Cow, Dog)
GeneID: 8899	SWISS: Q13523	
Target: PRPF4		Predicted MW.: 58 kDa
Immunogen: KLH conjugated synthetic peptide derived from human PRPF4: 431-522/522.		Subcellular Location: Nucleus
Purification: affinity purified by Protein A		
Concentration: 1mg/ml		
Storage: Preservative: 0.02% Proclin300, Constituents: 1% BSA, 0.01M PBS, pH7.4. Shipped at 4°C. Store at -20°C for one year. Avoid repeated freeze/thaw cycles.		
Background: Pre-mRNA splicing occurs in two sequential transesterification steps, and the protein encoded by this gene is thought to be involved in pre-mRNA splicing and in signal transduction. This protein belongs to a kinase family that includes serine/arginine- rich protein-specific kinases and cyclin-dependent kinases (CDKs). This protein is regarded as a CDK-like kinase (Clk) with homology to mitogen-activated protein kinases (MAPKs). [provided by RefSeq, Jul 2008]		

— VALIDATION IMAGES —

Sample: Raji (Human) Cell Lysate at 40 ug HepG2 (Human) Cell Lysate at 40 ug HeLa (Human) Cell Lysate at 40 ug Primary: Anti-PRPF4(bs-20098R) at 1/300 dilution Secondary: IRDye800CW Goat Anti-Rabbit IgG at 1/20000 dilution Predicted band size: 58kD Observed band size: 58kD



Sample: bone (mouse) Lysate at 40 ug lymph node (mouse) Lysate at 40 ug Primary: Anti-PRPF4(bs-20098R) at 1/300 dilution Secondary: IRDye800CW Goat Anti-Rabbit IgG at 1/20000 dilution Predicted band size: 58 kD Observed band size: 58 kD