

**bs-16697R**

**[ Primary Antibody ]**

## **UHRF1BP1 Rabbit pAb**

**BioSS**  
ANTIBODIES

www.bioss.com.cn

sales@bioss.com.cn

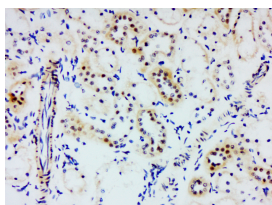
techsupport@bioss.com.cn

400-901-9800

### **— DATASHEET —**

<b>Host:</b> Rabbit	<b>Isotype:</b> IgG	<b>Applications:</b> <b>IHC-P</b> (1:100-500) <b>IHC-F</b> (1:100-500) <b>IF</b> (1:100-500)  <b>Reactivity:</b> Rat (predicted: Human, Mouse, Cow, Chicken, Horse)  <b>Predicted MW.:</b> 159 kDa
<b>Clonality:</b> Polyclonal		
<b>Target:</b> UHRF1BP1		
<b>Immunogen:</b> KLH conjugated synthetic peptide derived from human UHRF1BP1: 1-100/1440.		
<b>Purification:</b> affinity purified by Protein A		
<b>Concentration:</b> 1mg/ml		
<b>Storage:</b> 0.01M TBS (pH7.4) with 1% BSA, 0.02% Proclin300 and 50% Glycerol. Shipped at 4°C. Store at -20°C for one year. Avoid repeated freeze/thaw cycles.		

### **— VALIDATION IMAGES —**



Paraformaldehyde-fixed, paraffin embedded (Rat kidney); Antigen retrieval by boiling in sodium citrate buffer (pH6.0) for 15min; Block endogenous peroxidase by 3% hydrogen peroxide for 20 minutes; Blocking buffer (normal goat serum) at 37°C for 30min; Antibody incubation with (UHRF1BP1) Polyclonal Antibody, Unconjugated (bs-16697R) at 1:200 overnight at 4°C, followed by a conjugated secondary (sp-0023) for 20 minutes and DAB staining.