

bs-11482R**[Primary Antibody]**

Semaphorin 5B Rabbit pAb

BioSS
ANTIBODIES

www.bioss.com.cn

sales@bioss.com.cn

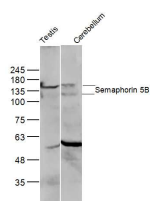
techsupport@bioss.com.cn

400-901-9800

— DATASHEET —

Host: Rabbit	Isotype: IgG	Applications: WB (1:500-2000)
Clonality: Polyclonal		
GeneID: 54437	SWISS: Q9P283	
Target: Semaphorin 5B		
Immunogen: KLH conjugated synthetic peptide derived from human SEMA5B/Semaphorin 5B: 146-195/1151.		
Purification: affinity purified by Protein A		Reactivity: Mouse (predicted: Human, Rat, Sheep, Cow, Chicken, Dog, Horse)
Concentration: 1mg/ml		Predicted MW.: 126 kDa
Storage: 0.01M TBS (pH7.4) with 1% BSA, 0.02% Proclin300 and 50% Glycerol. Shipped at 4°C. Store at -20°C for one year. Avoid repeated freeze/thaw cycles.		Subcellular Location: Cell membrane
Background: Semaphorins are a family of cell surface and secreted proteins that are conserved from insects to humans. Members of this family of proteins are approximately 750 amino acids in length (including signal sequences) and are defined by a conserved extracellular "semaphorin" domain of approximately 500 amino acids containing 14-16 cysteines, blocks of conserved sequences and no obvious repeats. Secreted and cell-bound semaphorins chemically attract and repel the growth of neural axons, guiding the development of intricate networks of neural tissue. SEMA5B (semaphorin-5B), also known as SEMAG, is a 1151 amino acid member of the semaphorin family. Localized to the membrane, SEMA5B is a single-pass type III protein that functions to convey positive axonal guidance cues and can induce calpain-mediated cleavage of calcineurin. Three isoforms exist due to alternative splicing events.		

— VALIDATION IMAGES —



Sample: Testis (Mouse) Lysate at 40 ug
Cerebellum (Mouse) Lysate at 40 ug Primary:
Anti-Semaphorin 5B (bs-11482R) at 1/300
dilution Secondary: IRDye800CW Goat Anti-
Rabbit IgG at 1/20000 dilution Predicted band
size: 126 kD Observed band size: 126/150 kD