
Semaphorin 3E Rabbit pAb

Catalog Number: bs-11480R

Target Protein: Semaphorin 3E

Concentration: 1mg/ml

Form: Liquid

Host: Rabbit

Clonality: Polyclonal

Isotype: IgG

Applications: WB (1:500-2000)

Reactivity: Human, Mouse (predicted:Rat, Rabbit, Pig, Sheep, Cow, Horse)

Predicted MW: 86 kDa

Subcellular: Secreted

Locations:

Entrez Gene: 9723

Swiss Prot: O15041

Source: KLH conjugated synthetic peptide derived from human SEMA3E/Semaphorin 3E:
401-450/775.

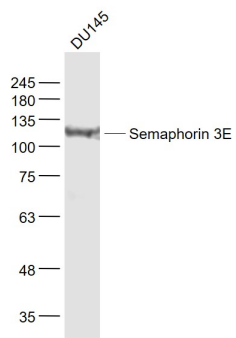
Purification: affinity purified by Protein A

Storage: 0.01M TBS (pH7.4) with 1% BSA, 0.02% Proclin300 and 50% Glycerol.

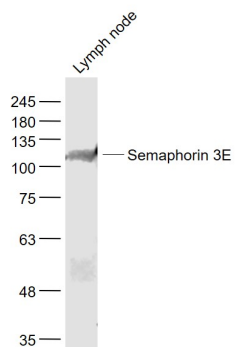
Shipped at 4°C. Store at -20°C for one year. Avoid repeated freeze/thaw cycles.

Background: Semaphorins are a large family of conserved secreted and membrane associated proteins which possess a semaphorin (Sema) domain and a PSI domain (found in plexins, semaphorins and integrins) in the N-terminal extracellular portion. Based on sequence and structural similarities, semaphorins are put into eight classes: invertebrates contain classes 1 and 2, viruses have class V, and vertebrates contain classes 3-7. Semaphorins serve as axon guidance ligands via multimeric receptor complexes, some (if not all) containing plexin proteins. This gene encodes a class 4 semaphorin. This gene encodes a class 3 semaphorin. Multiple transcript variants encoding different isoforms have been found for this gene.[provided by RefSeq, May 2010]

VALIDATION IMAGES



Sample: DU145(Human) Cell Lysate at 30 ug Primary: Anti- Semaphorin 3E (bs-11480R) at 1/1000 dilution
 Secondary: IRDye800CW Goat Anti-Rabbit IgG at 1/20000 dilution Predicted band size: 86 kD Observed band size: 111 kD



Sample: Lymph node (Mouse) Lysate at 40 ug Primary: Anti- Semaphorin 3E (bs-11480R) at 1/1000 dilution
 Secondary: IRDye800CW Goat Anti-Rabbit IgG at 1/20000 dilution Predicted band size: 86 kD Observed band size: 111 kD