

**bs-11479R****[ Primary Antibody ]****SEMA4G Rabbit pAb****BioSS**  
**ANTIBODIES**

www.bioss.com.cn

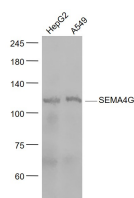
sales@bioss.com.cn

techsupport@bioss.com.cn

400-901-9800

**— DATASHEET —**

<b>Host:</b> Rabbit	<b>Isotype:</b> IgG	<b>Applications:</b> WB (1:500-2000)
<b>Clonality:</b> Polyclonal		<b>Reactivity:</b> Human (predicted: Mouse, Rat, Dog, Horse)
<b>GeneID:</b> 57715	<b>SWISS:</b> Q9NTN9	
<b>Target:</b> SEMA4G		<b>Predicted MW.:</b> 90 kDa
<b>Immunogen:</b> KLH conjugated synthetic peptide derived from human SEMA4G: 71-120/838. < Extracellular >		<b>Subcellular Location:</b> Cell membrane
<b>Purification:</b> affinity purified by Protein A		
<b>Concentration:</b> 1mg/ml		
<b>Storage:</b> 0.01M TBS (pH7.4) with 1% BSA, 0.02% Proclin300 and 50% Glycerol. Shipped at 4°C. Store at -20°C for one year. Avoid repeated freeze/thaw cycles.		
<b>Background:</b> Semaphorins are a family of cell surface and secreted proteins that are conserved from insects to humans. Members of this family of proteins are approximately 750 amino acids in length (including signal sequences) and are defined by a conserved extracellular "semaphorin" domain of approximately 500 amino acids containing 14-16 cysteines, blocks of conserved sequences and no obvious repeats. Secreted and cell-bound semaphorins chemically attract and repel the growth of neural axons, guiding the development of intricate networks of neural tissue. SEMA4G (semaphorin-4G) is an 838 amino acid single-pass type I membrane protein that is thought to play a role in axon guidance. Existing as three alternatively spliced isoforms, SEMA4G contains one Ig-like C2-type (immunoglobulin-like) domain, a PSI domain and a single SEMA domain.		

**— VALIDATION IMAGES —**

Sample: HepG2(Human) Cell Lysate at 30 ug  
A549(Human) Cell Lysate at 30 ug Primary: Anti-  
SEMA4G (bs-11479R) at 1/1000 dilution  
Secondary: IRDye800CW Goat Anti-Rabbit IgG at  
1/20000 dilution Predicted band size: 90 kD  
Observed band size: 105kD