

bs-23699R**[Primary Antibody]****TFPI-2 Rabbit pAb****Bioss**
ANTIBODIES

www.bioss.com.cn

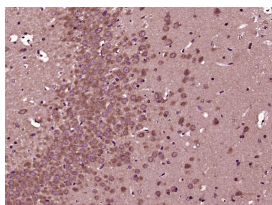
sales@bioss.com.cn

techsupport@bioss.com.cn

400-901-9800

— DATASHEET —

Host: Rabbit	Isotype: IgG	Applications: IHC-P (1:100-500) IHC-F (1:100-500) IF (1:100-500) Reactivity: Rat (predicted: Mouse) Predicted MW.: 25 kDa Subcellular Location: Secreted
Clonality: Polyclonal		
GeneID: 7980	SWISS: P48307	
Target: TFPI-2		
Immunogen: KLH conjugated synthetic peptide derived from human TFPI-2: 1-100/230.		
Purification: affinity purified by Protein A		
Concentration: 1mg/ml		
Storage: 0.01M TBS (pH7.4) with 1% BSA, 0.02% Proclin300 and 50% Glycerol. Shipped at 4°C. Store at -20°C for one year. Avoid repeated freeze/thaw cycles.		
Background: TFPI2 may play a role in the regulation of plasmin-mediated matrix remodeling. It inhibits trypsin, plasmin, factor VIIa/tissue factor and weakly factor Xa, but it has no effect on thrombin. TFPI2 is specific to umbilical vein endothelial cells, liver, placenta, heart, pancreas, and maternal serum at advanced pregnancy. This inhibitor contains three inhibitory domains. TFPI2 contains 3 BPTI/Kunitz inhibitor domains.		

— VALIDATION IMAGES —

Paraformaldehyde-fixed, paraffin embedded (Rat brain); Antigen retrieval by boiling in sodium citrate buffer (pH6.0) for 15min; Block endogenous peroxidase by 3% hydrogen peroxide for 20 minutes; Blocking buffer (normal goat serum) at 37°C for 30min; Antibody incubation with (TFPI-2) Polyclonal Antibody, Unconjugated (bs-23699R) at 1:400 overnight at 4°C, followed by operating according to SP Kit(Rabbit) (sp-0023) instructions and DAB staining.