

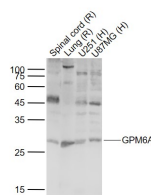
bs-10757R**[Primary Antibody]****GPM6A Rabbit pAb****Bioss**
ANTIBODIES

www.bioss.com.cn

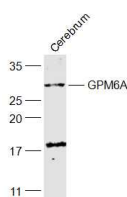
sales@bioss.com.cn

techsupport@bioss.com.cn

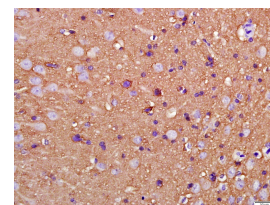
400-901-9800

— DATASHEET —**Host:** Rabbit**Isotype:** IgG**Clonality:** Polyclonal**GeneID:** 2823**SWISS:** P51674**Target:** GPM6A**Immunogen:** KLH conjugated synthetic peptide derived from human GPM6A: 151-250/278. < Extracellular >**Purification:** affinity purified by Protein A**Concentration:** 1mg/ml**Storage:** 0.01M TBS (pH7.4) with 1% BSA, 0.02% Proclin300 and 50% Glycerol.
Shipped at 4°C. Store at -20°C for one year. Avoid repeated freeze/thaw cycles.**Background:** GPM6A (Glycoprotein M6A) is a Protein Coding gene. GO annotations related to this gene include calcium channel activity. An important paralog of this gene is GPM6B.**Applications:** **WB** (1:500-2000)
IHC-P (1:100-500)
IHC-F (1:100-500)
IF (1:100-500)
Flow-Cyt (1µg/Test)**Reactivity:** Human, Mouse, Rat
(predicted: Rabbit, Dog)**Predicted MW.:** 31 kDa**Subcellular Location:** Cell membrane**— VALIDATION IMAGES —**

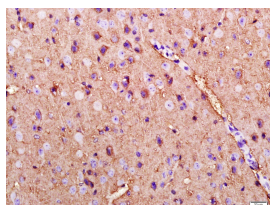
Sample: Lane 1: Spinal cord (Rat) Lysate at 40 ug
Lane 2: Lung (Rat) Lysate at 40 ug Lane 3: U251 (Human) Cell Lysate at 30 ug Lane 4: U87MG (Human) Cell Lysate at 30 ug
Primary: Anti-GPM6A (bs-10757R) at 1/1000 dilution
Secondary: IRDye800CW Goat Anti-Rabbit IgG at 1/20000 dilution
Predicted band size: 31 kD
Observed band size: 28 kD



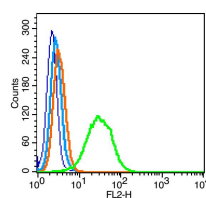
Sample: Cerebrum (Mouse) Lysate at 40 ug
Primary: Anti-GPM6A (bs-10757R) at 1/1000 dilution
Secondary: IRDye800CW Goat Anti-Rabbit IgG at 1/20000 dilution
Predicted band size: 31 kD
Observed band size: 31 kD



Paraformaldehyde-fixed, paraffin embedded (Rat brain); Antigen retrieval by boiling in sodium citrate buffer (pH6.0) for 15min; Block endogenous peroxidase by 3% hydrogen peroxide for 20 minutes; Blocking buffer (normal goat serum) at 37°C for 30min; Antibody incubation with (GPM6A) Polyclonal Antibody, Unconjugated (bs-10757R) at 1:500 overnight at 4°C, followed by a conjugated secondary (sp-0023) for 20 minutes and DAB staining.



Paraformaldehyde-fixed, paraffin embedded (Mouse brain); Antigen retrieval by boiling in sodium citrate buffer (pH6.0) for 15min; Block endogenous peroxidase by 3% hydrogen peroxide for 20 minutes; Blocking buffer (normal goat serum) at 37°C for 30min; Antibody incubation with (GPM6A) Polyclonal Antibody, Unconjugated (bs-10757R) at 1:500 overnight at 4°C, followed by a conjugated secondary (sp-0023) for 20 minutes and DAB staining.



Blank control: RSC96(blue), the cells were fixed with 2% paraformaldehyde (10 min) and then permeabilized with ice-cold 90% methanol for 30 min on ice. Isotype Control Antibody: Rabbit IgG(orange) ; Secondary Antibody: Goat anti-rabbit IgG-PE(white blue), Dilution: 1:200 in 1 X PBS containing 0.5% BSA ; Primary Antibody Dilution: 0.2µg in 100 µL1X PBS containing 0.5% BSA(green).