

bs-24175R**[Primary Antibody]****RBM11 Rabbit pAb****Bioss**
ANTIBODIES

www.bioss.com.cn

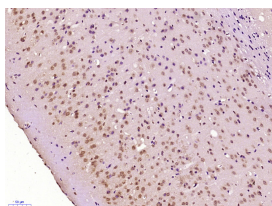
sales@bioss.com.cn

techsupport@bioss.com.cn

400-901-9800

— DATASHEET —

Host: Rabbit	Isotype: IgG	Applications: IHC-P (1:100-500)
Clonality: Polyclonal		IHC-F (1:100-500)
GeneID: 54033	SWISS: P57052	IF (1:100-500)
Target: RBM11		
Immunogen: KLH conjugated synthetic peptide derived from human RBM11: 1-100/238.		
Purification: affinity purified by Protein A		Reactivity: Mouse (predicted: Human, Rat, Rabbit, Pig, Sheep, Cow, Dog, Horse)
Concentration: 1mg/ml		
Storage: 0.01M TBS (pH7.4) with 1% BSA, 0.02% Proclin300 and 50% Glycerol. Shipped at 4°C. Store at -20°C for one year. Avoid repeated freeze/thaw cycles.		Predicted MW.: 32 kDa
Background: RBM11 (RNA Binding Motif Protein 11) is a Protein Coding gene. GO annotations related to this gene include nucleic acid binding and nucleotide binding. An important paralog of this gene is RBM7.		Subcellular Location: Nucleus

— VALIDATION IMAGES —

Paraformaldehyde-fixed, paraffin embedded (Mouse brain); Antigen retrieval by boiling in sodium citrate buffer (pH6.0) for 15min; Block endogenous peroxidase by 3% hydrogen peroxide for 20 minutes; Blocking buffer (normal goat serum) at 37°C for 30min; Antibody incubation with (RBM11) Polyclonal Antibody, Unconjugated (bs-24175R) at 1:400 overnight at 4°C, followed by operating according to SP Kit(Rabbit) (sp-0023) instructions and DAB staining.