

**bs-23909R****[ Primary Antibody ]****SHISA5 Rabbit pAb****Bioss**  
**ANTIBODIES**

www.bioss.com.cn

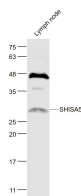
sales@bioss.com.cn

techsupport@bioss.com.cn

400-901-9800

**— DATASHEET —**

<b>Host:</b> Rabbit	<b>Isotype:</b> IgG	<b>Applications:</b> WB (1:500-2000)
<b>Clonality:</b> Polyclonal		<b>Reactivity:</b> Mouse (predicted: Human)
<b>GeneID:</b> 51246	<b>SWISS:</b> Q8N114	
<b>Target:</b> SHISA5		
<b>Immunogen:</b> KLH conjugated synthetic peptide derived from human SHISA5: 51-150/240.		<b>Predicted MW.:</b> 26 kDa
<b>Purification:</b> affinity purified by Protein A		<b>Subcellular Location:</b> Nucleus
<b>Concentration:</b> 1mg/ml		
<b>Storage:</b> 0.01M TBS (pH7.4) with 1% BSA, 0.02% Proclin300 and 50% Glycerol. Shipped at 4°C. Store at -20°C for one year. Avoid repeated freeze/thaw cycles.		
<b>Background:</b> This gene encodes a member of the shisa family. The encoded protein is localized to the endoplasmic reticulum, and together with p53 induces apoptosis in a caspase-dependent manner. Alternative splicing results in multiple transcript variants. [provided by RefSeq, Jan 2013]		

**— VALIDATION IMAGES —**

Sample: Lymph node (Mouse) Lysate at 40 ug  
Primary: Anti- SHISA5 (bs-23909R) at 1/1000  
dilution Secondary: IRDye800CW Goat Anti-  
Rabbit IgG at 1/20000 dilution Predicted band  
size: 26 kD Observed band size: 26 kD