

## Casein kappa Rabbit pAb

Catalog Number: bs-10031R

Target Protein: Casein kappa

Concentration: 1mg/ml

Form: Liquid

Host: Rabbit

Clonality: Polyclonal

Isotype: IgG

Applications: WB (1:500-2000)

Reactivity: Cow (predicted:Sheep)

Predicted MW: 19 kDa

Source: KLH conjugated synthetic peptide derived from cow Kappa-casein: 111-170/190.

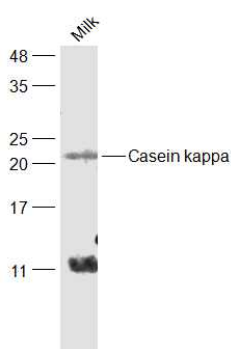
Purification: affinity purified by Protein A

Storage: 0.01M TBS (pH7.4) with 1% BSA, 0.02% Proclin300 and 50% Glycerol.

Shipped at 4°C. Store at -20°C for one year. Avoid repeated freeze/thaw cycles.

Background: Important role in determination of the surface properties of the casein micelles.

### VALIDATION IMAGES



Sample: Milk(Cow) at 30 ug Primary: Anti-Casein kappa (bs-10031R) at 1/1000 dilution Secondary: IRDye800CW Goat Anti-Rabbit IgG at 1/20000 dilution Predicted band size: 19 kD Observed band size: 21 kD