

bs-7554R**[Primary Antibody]****phospho-Eph receptor A2+A3+A4 (Tyr588 + Tyr596) Rabbit pAb****BioSS**
ANTIBODIES

www.bioss.com.cn

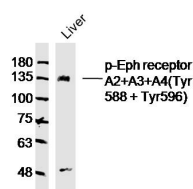
sales@bioss.com.cn

techsupport@bioss.com.cn

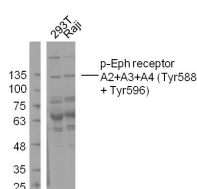
400-901-9800

— DATASHEET —

Host: Rabbit Clonality: Polyclonal GeneID: 1969 Target: Eph receptor A2+A3+A4 (Tyr588 + Tyr596) Immunogen: KLH conjugated synthesised phosphopeptide derived from human Eph receptor A2 around the phosphorylation site of Tyr588 + Tyr596: KT(p-Y)VD. < Cytoplasmic > Purification: affinity purified by Protein A Concentration: 1mg/ml Storage: 0.01M TBS (pH7.4) with 1% BSA, 0.02% Proclin300 and 50% Glycerol. Shipped at 4°C. Store at -20°C for one year. Avoid repeated freeze/thaw cycles. Background: This gene belongs to the ephrin receptor subfamily of the protein-tyrosine kinase family. EPH and EPH-related receptors have been implicated in mediating developmental events, particularly in the nervous system. Receptors in the EPH subfamily typically have a single kinase domain and an extracellular region containing a Cys-rich domain and 2 fibronectin type III repeats. The ephrin receptors are divided into 2 groups based on the similarity of their extracellular domain sequences and their affinities for binding ephrin-A and ephrin-B ligands. This gene encodes a protein that binds ephrin-A ligands. Mutations in this gene are the cause of certain genetically-related cataract disorders.[provided by RefSeq, May 2010].	Isotype: IgG SWISS: P29317 Applications: WB (1:500-2000) Reactivity: Human, Mouse (predicted: Rat, Rabbit, Pig, Cow, Chicken, Dog, Horse) Predicted MW.: 105 kDa Subcellular Location: Cell membrane
---	--

— VALIDATION IMAGES —

Sample: Liver (Mouse) Lysate at 40 ug Primary: Anti-phospho-Eph receptor A2+A3+A4 (Tyr588 + Tyr596) (bs-7554R) at 1/300 dilution Secondary: IRDye800CW Goat Anti-Rabbit IgG at 1/20000 dilution Predicted band size: 105kD Observed band size: 130kD



Sample: 293T Cell (Human) Lysate at 30 ug Primary: Anti-phospho-Eph receptor A2+A3+A4 (Tyr588 + Tyr596) (bs-7554R) at 1/300 dilution Secondary: IRDye800CW Goat Anti-Rabbit IgG at 1/20000 dilution Predicted band size: 105 kD Observed band size: 135 kD