

bs-9861R**[Primary Antibody]****BioSS**
ANTIBODIES

www.bioss.com.cn

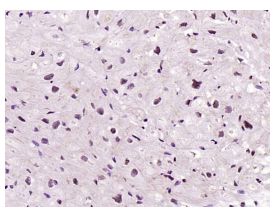
sales@bioss.com.cn

techsupport@bioss.com.cn

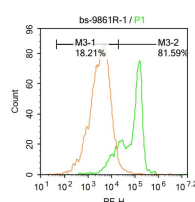
400-901-9800

Titin Rabbit pAb**— DATASHEET —**

Host: Rabbit	Isotype: IgG	Applications: IHC-P (1:100-500)
Clonality: Polyclonal		IHC-F (1:100-500)
GeneID: 7273	SWISS: Q8WZ42	IF (1:50-200)
Target: Titin		Flow-Cyt (1ug/test)
Immunogen: KLH conjugated synthetic peptide derived from human Titin/CMD1G: 2601-2800/34350.		Reactivity: Human (predicted: Mouse, Rat, Pig, Cow)
Purification: affinity purified by Protein A		
Concentration: 1mg/ml		Predicted MW.: 3780 kDa
Storage: 0.01M TBS (pH7.4) with 1% BSA, 0.02% Proclin300 and 50% Glycerol. Shipped at 4°C. Store at -20°C for one year. Avoid repeated freeze/thaw cycles.		Subcellular Location: Cytoplasm ,Nucleus
Background: Titin, also known as connectin, is a large protein involved in the temporal and spatial control of the assembly of the highly ordered sarcomeres (contractile units) of striated muscle. In addition to sarcomere assembly Titin also functions to maintain the structural integrity of the contracting myofibrils within the muscle and to organize the machinery for condensation of chromosomes in dividing cells. Titin is a giant protein composed of 27,000 amino acids and contains an autoregulated serine kinase catalytic domain as well as a calcium/calmodulin binding region that are involved in its activation. Activated Titin phosphorylates the muscle protein telethonin, a sarcomeric protein abundant in heart and skeletal muscle, implicating Titin activity in the reorganization of the cytoskeleton during myofibrillogenesis.		

— VALIDATION IMAGES —

Paraformaldehyde-fixed, paraffin embedded (Human myocardium); Antigen retrieval by boiling in sodium citrate buffer (pH6.0) for 15min; Block endogenous peroxidase by 3% hydrogen peroxide for 20 minutes; Blocking buffer (normal goat serum) at 37°C for 30min; Antibody incubation with (Titin) Polyclonal Antibody, Unconjugated (bs-9861R) at 1:200 overnight at 4°C, followed by operating according to SP Kit(Rabbit) (sp-0023) instructions and DAB staining.



Molt-4 cells were fixed with 4% PFA for 10min at room temperature, permeabilized with 90% ice-cold methanol for 20 min at -20°C, and incubated in 5% BSA blocking buffer for 30 min at room temperature. Cells were then stained with CMD1G Antibody(bs-9861R) at 1:500 dilution in blocking buffer and incubated for 30 min at room temperature, washed twice with 2%BSA in PBS, followed by secondary antibody incubation for 40 min at room temperature. Acquisitions of 20,000 events were performed. Cells stained with primary antibody (green), and isotype control (orange).

— SELECTED CITATIONS —

- **[IF=6.304]** Ying Wang. et al. Long noncoding RNA TTN-AS1 facilitates tumorigenesis and metastasis by maintaining TTN expression in skin cutaneous melanoma. Cell Death Dis. 2020 Aug;11(8):1-13 WB ;Mouse. 32820147
- **[IF=5.3]** Hongyun Wei. et al. Titin as a potential novel therapeutic target in colorectal cancer. JOURNAL OF CELLULAR

Important Note: This product as supplied is intended for research use only, not for use in human, therapeutic or diagnostic applications.

AND MOLECULAR MEDICINE. 2023 Jul;: IHC ;Human. 37499109

- **[IF=4.9]** Yu Mu. et al. Exploring the Multi-Faceted Effects of Berberine in Ameliorating Diastolic Dysfunction in Rats with Heart Failure with Preserved Ejection Fraction. INT J MOL SCI. 2025 Jan;26(10):4847 IF ;Rat. 40429987
- **[IF=2.766]** Kanda et al. Detection of titin fragments in urine in response to exercise-induced muscle damage. (2017) PLoS.One. 12:e0181623 IHC ;Human. 28727760