

**bs-4176R****[ Primary Antibody ]****SLC29A4 Rabbit pAb****Bioss**  
**ANTIBODIES**

www.bioss.com.cn

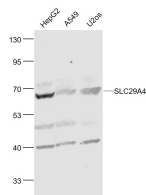
sales@bioss.com.cn

techsupport@bioss.com.cn

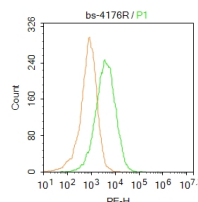
400-901-9800

**— DATASHEET —**

<b>Host:</b> Rabbit <b>Clonality:</b> Polyclonal <b>GeneID:</b> 222962 <b>Target:</b> SLC29A4 <b>Immunogen:</b> KLH conjugated synthetic peptide derived from human SLC29A4: 401-500/530. <b>Purification:</b> affinity purified by Protein A <b>Concentration:</b> 1mg/ml <b>Storage:</b> 0.01M TBS (pH7.4) with 1% BSA, 0.02% Proclin300 and 50% Glycerol. Shipped at 4°C. Store at -20°C for one year. Avoid repeated freeze/thaw cycles. <b>Background:</b> This gene is a member of the SLC29 family and encodes a plasma membrane protein with 11 transmembrane helices. This protein catalyzes the reuptake of monoamines into presynaptic neurons, thus determining the intensity and duration of monoamine neural signaling. It has been shown to transport several compounds, including serotonin, dopamine, and the neurotoxin 1-methyl-4-phenylpyridinium. Alternate transcriptional splice variants which encode the same protein have been characterized. [provided by RefSeq, Jul 2008].	<b>Isotype:</b> IgG  <b>SWISS:</b> Q7RTT9	<b>Applications:</b> <b>WB</b> (1:500-2000) <b>Flow-Cyt</b> (3ug/Test)  <b>Reactivity:</b> Human (predicted: Mouse, Rat, Rabbit, Pig, Cow, Dog)  <b>Predicted MW.:</b> 58 kDa  <b>Subcellular Location:</b> Cell membrane
--	---	--

**— VALIDATION IMAGES —**

Sample: HepG2(Human) Cell Lysate at 30 ug  
A549 (Human) Cell Lysate at 30 ug U2os(Human)  
Cell Lysate at 30 ug Primary: Anti-SLC29A4  
(bs-4176R) at 1/1000 dilution Secondary:  
IRDye800CW Goat Anti-Rabbit IgG at 1/20000  
dilution Predicted band size: 58 kD Observed  
band size: 58 kD



Blank control: HepG2. Primary Antibody (green line): Rabbit Anti-SLC29A4 antibody (bs-4176R)  
Dilution: 1µg /10<sup>6</sup> cells; Isotype Control  
Antibody (orange line): Rabbit IgG . Secondary  
Antibody : Goat anti-rabbit IgG-PE Dilution: 1µg  
/test. Protocol The cells then incubated in  
5%BSA to block non-specific protein-protein  
interactions for 30 min at room temperature  
.Cells stained with Primary Antibody for 30 min  
at room temperature. The secondary antibody  
used for 40 min at room temperature.  
Acquisition of 20,000 events was performed.

**— SELECTED CITATIONS —**

- **[IF=5.9]** Peterson Erik R.. et al. Purine salvage promotes treatment resistance in H3K27M-mutant diffuse midline glioma. CANCER METAB. 2024 Dec;12(1):1-19 WB ;Human. 38594734
- **[IF=4.432]** Yong Gu. et al. Estradiol reduced 5-HT reuptake by Downregulating the Gene Expression of Plasma Membrane Monoamine Transporter (PMAT, Slc29a4) through estrogen receptor β and the MAPK/ERK signaling pathway. EUR J PHARMACOL. Eur J Pharmacol. 2022 Apr;;174939 WB,IF ;Rat. 35398393

Important Note: This product as supplied is intended for research use only, not for use in human, therapeutic or diagnostic applications.