

## MS4A6A Rabbit pAb

Catalog Number: bs-13692R

Target Protein: MS4A6A

Concentration: 1mg/ml

Form: Liquid

Host: Rabbit

Clonality: Polyclonal

Isotype: IgG

Applications: WB (1:500-2000)

Reactivity: Human, Mouse, Rat

Predicted MW: 27 kDa

Subcellular Cell membrane

Locations:

Entrez Gene: 64231

Swiss Prot: Q9H2W1

Source: KLH conjugated synthetic peptide derived from human MS4A6A: 1-100/248.

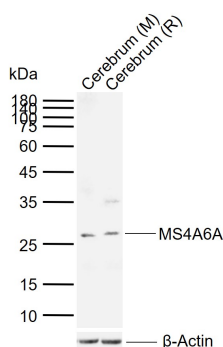
Purification: affinity purified by Protein A

Storage: 0.01M TBS (pH7.4) with 1% BSA, 0.02% Proclin300 and 50% Glycerol.

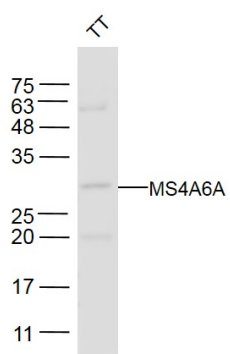
Shipped at 4°C. Store at -20°C for one year. Avoid repeated freeze/thaw cycles.

**Background:** MS4A6A is a member of the membrane-spanning 4A gene family and may be involved in signal transduction as a component of a multimeric receptor complex. There are three named isoforms.

### VALIDATION IMAGES



Sample: Lane 1: Mouse Cerebrum tissue lysates Lane 2: Rat Cerebrum tissue lysates Primary: Anti-MS4A6A (bs-13692R) at 1/1000 dilution Secondary: IRDye800CW Goat Anti-Rabbit IgG at 1/20000 dilution Predicted band size: 27 kDa Observed band size: 27 kDa



Sample: TT(Human) Cell Lysate at 40 ug Primary: Anti-MS4A6A (bs-13692R) at 1/300 dilution Secondary: IRDye800CW Goat Anti-Rabbit IgG at 1/20000 dilution Predicted band size: 27 kD Observed band size: 27 kD