

bs-16480R

[Primary Antibody]

ZNF776 Rabbit pAb

BioSS
ANTIBODIES

www.bioss.com.cn

sales@bioss.com.cn

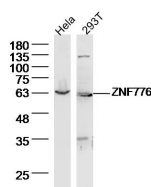
techsupport@bioss.com.cn

400-901-9800

— DATASHEET —

Host: Rabbit	Isotype: IgG	Applications: WB (1:500-2000)
Clonality: Polyclonal		Reactivity: Human
GeneID: 284309	SWISS: Q68DI1	
Target: ZNF776		
Immunogen: KLH conjugated synthetic peptide derived from human ZNF776: 121-220/518.		Predicted MW.: 60 kDa
Purification: affinity purified by Protein A		Subcellular Location: Nucleus
Concentration: 1mg/ml		
Storage: 0.01M TBS (pH7.4) with 1% BSA, 0.02% Proclin300 and 50% Glycerol. Shipped at 4°C. Store at -20°C for one year. Avoid repeated freeze/thaw cycles.		

— VALIDATION IMAGES —



Sample: HeLa Cell Lysate at 40 ug 293T Cell
Lysate at 40 ug Primary: Anti-ZNF776
(bs-16480R) at 1/300 dilution Secondary:
IRDye800CW Goat Anti-Rabbit IgG at 1/20000
dilution Predicted band size: 60 kD Observed
band size: 60 kD