

bs-10011R**[Primary Antibody]****Bioss**
ANTIBODIES

www.bioss.com.cn

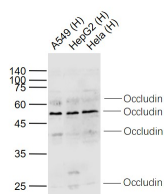
sales@bioss.com.cn

techsupport@bioss.com.cn

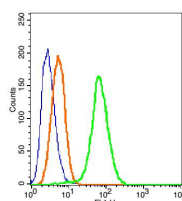
400-901-9800

Occludin Rabbit pAb**DATASHEET**

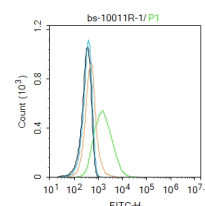
Host: Rabbit	Isotype: IgG	Applications: WB (1:500-2000) Flow-Cyt (2µg/Test)
Clonality: Polyclonal		
GeneID: 100506658	SWISS: Q16625	Reactivity: Human (predicted: Mouse, Rat, Pig, Cow, Dog, GuineaPig, Horse)
Target: Occludin		
Immunogen: KLH conjugated synthetic peptide derived from human Occludin: 151-250/522. < Extracellular >		
Purification: affinity purified by Protein A		Predicted MW.: 59 kDa
Concentration: 1mg/ml		Subcellular Location: Cell membrane
Storage: 0.01M TBS (pH7.4) with 1% BSA, 0.02% Proclin300 and 50% Glycerol. Shipped at 4°C. Store at -20°C for one year. Avoid repeated freeze/thaw cycles.		
Background: This gene encodes an integral membrane protein which is located at tight junctions. This protein may be involved in the formation and maintenance of the tight junction. The possibility of several alternatively spliced products has been suggested but the full nature of these products has not been described. [provided by RefSeq].		

VALIDATION IMAGES

Sample: Lane 1: A549 (Human) Cell Lysate at 30 ug
Lane 2: HepG2 (Human) Cell Lysate at 30 ug
Lane 3: Hela (Human) Cell Lysate at 30 ug
Primary: Anti-Occludin (bs-10011R) at 1/1000 dilution
Secondary: IRDye800CW Goat Anti-Rabbit IgG at 1/20000 dilution
Predicted band size: 65/55/38/28 kD
Observed band size: 62/52/40/25 kD



Blank control (blue): 293T (fixed with 2% paraformaldehyde (10 min) and then permeabilized with ice-cold 90% methanol for 30 min on ice). Primary Antibody: Rabbit Anti-Occludin/FITC Conjugated antibody (bs-10011R /FITC), Dilution: 1µg in 100 µL 1X PBS containing 0.5% BSA; Isotype Control Antibody: Rabbit IgG/FITC (orange), used under the same conditions.



Blank control: MCF7. Primary Antibody (green line): Rabbit Anti-Occludin antibody (bs-10011R) Dilution: 1µg / 10⁶ cells; Isotype Control Antibody (orange line): Rabbit IgG. Secondary Antibody: Goat anti-rabbit IgG-FITC Dilution: 1µg /test. Protocol The cells were incubated in 5% BSA to block non-specific protein-protein interactions for 30 min at room temperature. Cells stained with Primary Antibody for 30 min at room temperature. The secondary antibody used for 40 min at room temperature. Acquisition of 20,000 events was performed.

SELECTED CITATIONS

- **[IF=17.1]** Lei Liu. et al. Myricetin Oligomer Triggers Multi-Receptor Mediated Penetration and Autophagic Restoration of Blood-Brain Barrier for Ischemic Stroke Treatment. ACS NANO. 2024;XXXX(XXX):XXX-XXX WB ;Mouse. 38533773
- **[IF=14.7]** Chunxiao Liu. et al. Targeting P2Y₁₄R protects against necroptosis of intestinal epithelial cells through PKA/CREB/RIPK1 axis in ulcerative colitis. nature communications. 2024 Mar 7;15(1):2083. IF ;Mouse. 38453952
- **[IF=13.352]** Guangdong Bai. et al. Perinatal exposure to glyphosate-based herbicides impairs progeny health and placental angiogenesis by disturbing mitochondrial function. ENVIRON INT. 2022 Dec;170:107579 IF ;Pig. 36265358
- **[IF=10.479]** Shiyun Chen. et al. Targeted delivery of Chinese herb pair-based berberine/tannin acid self-assemblies for

Important Note: This product as supplied is intended for research use only, not for use in human, therapeutic or diagnostic applications.

the treatment of ulcerative colitis. J Adv Res. 2021 Nov;; IF ;Mouse. 10.1016/j.jare.2021.11.017

- **[IF=10.2]** Deng Zihan. et al. Gold nanoparticles exhibit anti-osteoarthritic effects via modulating interaction of the “microbiota-gut-joint” axis. J NANOBIOTECHNOL. 2024 Dec;22(1):1-23 IF ;Mouse. 38589904