

**bs-4128R****[ Primary Antibody ]****MAP4 Rabbit pAb****BioSS**  
**ANTIBODIES**

www.bioss.com.cn

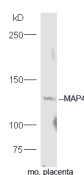
sales@bioss.com.cn

techsupport@bioss.com.cn

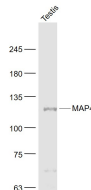
400-901-9800

**— DATASHEET —**

<b>Host:</b> Rabbit	<b>Isotype:</b> IgG	<b>Applications:</b> WB (1:500-2000)
<b>Clonality:</b> Polyclonal		<b>Reactivity:</b> Human, Mouse (predicted: Rat, Pig, Cow, Dog, Horse)
<b>GeneID:</b> 4134	<b>SWISS:</b> P27816	<b>Predicted MW.:</b> 121 kDa
<b>Target:</b> MAP4		<b>Subcellular Location:</b> Cytoplasm
<b>Immunogen:</b> KLH conjugated synthetic peptide derived from human MAP4: 701-800/1152.		
<b>Purification:</b> affinity purified by Protein A		
<b>Concentration:</b> 1mg/ml		
<b>Storage:</b> 0.01M TBS (pH7.4) with 1% BSA, 0.02% Proclin300 and 50% Glycerol. Shipped at 4°C. Store at -20°C for one year. Avoid repeated freeze/thaw cycles.		
<b>Background:</b> The MAP4 (Microtubule associated protein 4) is a non neuronal microtubule associated protein. It promotes microtubule assembly. The phosphorylation of the Pro rich region in the C-terminus negatively regulates MAP4 activity to promote microtubule assembly.		

**— VALIDATION IMAGES —**

Sample: Placenta (Mouse) Lysate at 40 ug  
Primary: Anti- MAP4 (bs-4128R) at 1/300 dilution  
Secondary: HRP conjugated Goat-Anti-rabbit IgG (bs-0295G-HRP) at 1/5000 dilution Predicted band size: 121 kD Observed band size: 121 kD



Sample: Testis (Mouse) Lysate at 40 ug Primary: Anti- MAP4 (bs-4128R) at 1/1000 dilution  
Secondary: IRDye800CW Goat Anti-Rabbit IgG at 1/20000 dilution Predicted band size: 121 kD Observed band size: 121 kD