

**bs-7734R****[ Primary Antibody ]****CAPD3 Rabbit pAb****BioSS**  
ANTIBODIES

www.bioss.com.cn

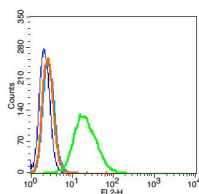
sales@bioss.com.cn

techsupport@bioss.com.cn

400-901-9800

**DATASHEET**

<b>Host:</b> Rabbit	<b>Isotype:</b> IgG	<b>Applications:</b> Flow-Cyt (1µg/Test)
<b>Clonality:</b> Polyclonal		
<b>GeneID:</b> 23310	<b>SWISS:</b> P42695	
<b>Target:</b> CAPD3		
<b>Immunogen:</b> KLH conjugated synthetic peptide derived from human CAPD3/hCAP-D3: 651-760/1498.		
<b>Purification:</b> affinity purified by Protein A		<b>Reactivity:</b> Rat (predicted: Human, Mouse, Dog, Horse)
<b>Concentration:</b> 1mg/ml		<b>Predicted MW.:</b> 169 kDa
<b>Storage:</b> 0.01M TBS (pH7.4) with 1% BSA, 0.02% Proclin300 and 50% Glycerol. Shipped at 4°C. Store at -20°C for one year. Avoid repeated freeze/thaw cycles.		<b>Subcellular Location:</b> Nucleus
<b>Background:</b> Condensin complexes I and II play essential roles in mitotic chromosome assembly and segregation. Condensins contain 2 invariant structural maintenance of chromosome (SMC) subunits, SMC2 and SMC4. hCAP-D3 is a regulatory non-SMC subunit of the condensin II complex.		

**VALIDATION IMAGES**

Blank control:RSC96 (fixed with 2% paraformaldehyde (10 min) , then permeabilized with 90% ice-cold methanol for 30 min on ice).  
Primary Antibody:Rabbit Anti- CAPD3 antibody(bs-7734R), Dilution: 1µg in 100 µL 1X PBS containing 0.5% BSA; Isotype Control Antibody: Rabbit IgG(orange) ,used under the same conditions ); Secondary Antibody: Goat anti-rabbit IgG-PE(white blue), Dilution: 1:200 in 1 X PBS containing 0.5% BSA.