

**bs-8173R****[ Primary Antibody ]****Dbx2 Rabbit pAb****Bioss**  
ANTIBODIES

www.bioss.com.cn

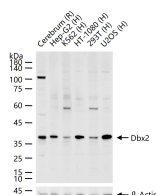
sales@bioss.com.cn

techsupport@bioss.com.cn

400-901-9800

**— DATASHEET —**

<b>Host:</b> Rabbit	<b>Isotype:</b> IgG	<b>Applications:</b> WB (1:500-2000)
<b>Clonality:</b> Polyclonal		<b>Reactivity:</b> Human, Rat (predicted: Mouse, Chicken, Dog, Horse)
<b>GeneID:</b> 440097	<b>SWISS:</b> Q6ZNG2	<b>Predicted MW.:</b> 37 kDa
<b>Target:</b> Dbx2		<b>Subcellular Location:</b> Nucleus
<b>Immunogen:</b> KLH conjugated synthetic peptide derived from human Dbx2: 211-339/339.		
<b>Purification:</b> affinity purified by Protein A		
<b>Concentration:</b> 1mg/ml		
<b>Storage:</b> 0.01M TBS (pH7.4) with 1% BSA, 0.02% Proclin300 and 50% Glycerol. Shipped at 4°C. Store at -20°C for one year. Avoid repeated freeze/thaw cycles.		
<b>Background:</b> Members of the Dbx family are implicated in regionalization of the CNS. Dbx2 is restricted to the ventricular region of the embryonic CNS as well as some of the mesenchymal cells, such as limb buds and tooth germs. BMP regulation of the expression boundaries of the homeobox proteins Dbx2, Pax6 and Msx1 generates precursor populations with distinct developmental potentials.		

**— VALIDATION IMAGES —**

25 ug total protein per lane of various lysates  
(see on figure) probed with Dbx2 polyclonal  
antibody, unconjugated (bs-8173R) at 1:1000  
dilution and 4°C overnight incubation. Followed  
by conjugated secondary antibody incubation at  
r.t. for 60 min.