

bs-5015R**[Primary Antibody]****ACADL Rabbit pAb****BioSS**
ANTIBODIES

www.bioss.com.cn

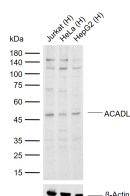
sales@bioss.com.cn

techsupport@bioss.com.cn

400-901-9800

— DATASHEET —

Host: Rabbit	Isotype: IgG	Applications: WB (1:500-2000) ICC/IF (1:100-500) ELISA (1:5000-10000) Reactivity: Human (predicted: Mouse, Rat) Predicted MW.: 44 kDa Subcellular Location: Cytoplasm
Clonality: Polyclonal		
GeneID: 33	SWISS: P28330	
Target: ACADL		
Immunogen: KLH conjugated synthetic peptide derived from human ACADL: 201-300/430.		
Purification: affinity purified by Protein A		
Concentration: 1mg/ml		
Storage: 0.01M TBS (pH7.4) with 1% BSA, 0.02% Proclin300 and 50% Glycerol. Shipped at 4°C. Store at -20°C for one year. Avoid repeated freeze/thaw cycles.		
Background: The protein encoded by this gene belongs to the acyl-CoA dehydrogenase family, which is a family of mitochondrial flavoenzymes involved in fatty acid and branched chain amino-acid metabolism. This protein is one of the four enzymes that catalyze the initial step of mitochondrial beta-oxidation of straight-chain fatty acid. Defects in this gene are the cause of long-chain acyl-CoA dehydrogenase (LCAD) deficiency, leading to nonketotic hypoglycemia. [provided by RefSeq].		

— VALIDATION IMAGES —

Sample: Lane 1: Human Jurkat cell lysates Lane 2: Human HeLa cell lysates Lane 3: Human HepG2 cell lysates Primary: Anti-ACADL (bs-5015R) at 1/1000 dilution Secondary: IRDye800CW Goat Anti-Rabbit IgG at 1/20000 dilution Predicted band size: 44 kDa Observed band size: 48 kDa

— SELECTED CITATIONS —

- **[IF=2]** Yankun Wang. et al. Investigation of seasonal changes in lipid synthesis and metabolism-related genes in the oviduct of Chinese brown frog (*Rana dybowskii*). EUR J HISTOCHEM. 2023 Oct 2; 67(4): 3890 IHC ;*Rana dybowskii*. 38116875