

**bs-15556R****[ Primary Antibody ]****IFNE1 Rabbit pAb****BioSS**  
**ANTIBODIES**

www.bioss.com.cn

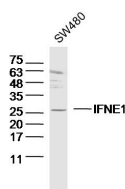
sales@bioss.com.cn

techsupport@bioss.com.cn

400-901-9800

**— DATASHEET —**

<b>Host:</b> Rabbit	<b>Isotype:</b> IgG	<b>Applications:</b> WB (1:500-2000)
<b>Clonality:</b> Polyclonal		<b>Reactivity:</b> Human (predicted: Mouse)
<b>GeneID:</b> 338376	<b>SWISS:</b> Q86WN2	
<b>Target:</b> IFNE1		
<b>Immunogen:</b> KLH conjugated synthetic peptide derived from human IFNE1: 101-200/208.		<b>Predicted MW.:</b> 22 kDa
<b>Purification:</b> affinity purified by Protein A		<b>Subcellular Location:</b> Cytoplasm
<b>Concentration:</b> 1mg/ml		
<b>Storage:</b> 0.01M TBS (pH7.4) with 1% BSA, 0.02% Proclin300 and 50% Glycerol. Shipped at 4°C. Store at -20°C for one year. Avoid repeated freeze/thaw cycles.		
<b>Background:</b> The genes encoding type I interferons (IFNs), which include 14 IFN-alpha genes, 1 IFN-beta gene, 1 IFN-gamma (also known as IFN- $\gamma$ ) gene, and a number of IFN-gamma pseudogenes, are clustered on human chromosome 9. Interferons-alpha and -beta are cytokines that are widely known to induce potent antiviral activity. IFN-alpha and -beta exert a variety of other biological effects, including anti-tumor and immunomodulatory activities, and are increasingly used clinically to treat a range of malignancies, myelodysplasias and autoimmune diseases.		

**— VALIDATION IMAGES —**

Sample: SW480 (human) cell Lysate at 40  $\mu$ g  
Primary: Anti- IFNE1 (bs-15556R) at 1/300 dilution  
Secondary: IRDye800CW Goat Anti-Rabbit IgG at 1/20000 dilution  
Predicted band size: 22 kD  
Observed band size: 25 kD