

NADPH oxidase 4 Recombinant Rabbit mAb

Catalog Number: bsm-52390R

Target Protein: NADPH oxidase 4

Concentration: 1mg/ml

Form: Liquid

Host: Rabbit

Clonality: Recombinant

Clone No.: 2A4

Isotype: IgG

Applications: WB (1:500-2000), IHC-P (1:50-200), IHC-F (1:50-200), IF (1:50-200)

Reactivity: Human, Rat (predicted:Mouse)

Predicted MW: 67 kDa

Entrez Gene: 50507

Swiss Prot: Q9NPH5

Source: Recombinant human NADPH oxidase 4: C-terminal.

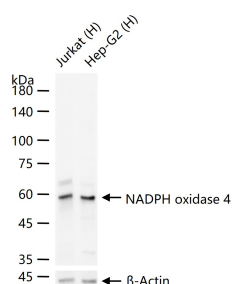
Purification: affinity purified by Protein A

Storage: 0.01M TBS (pH7.4) with 1% BSA, 0.02% Proclin300 and 50% Glycerol.

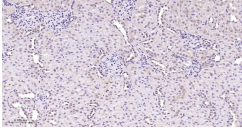
Shipped at 4°C. Store at -20°C for one year. Avoid repeated freeze/thaw cycles.

Background: Nox4 is a renal gp91-phox homolog highly expressed at the site of erythropoietin production in the proximal convoluted tubule epithelial cells of the renal cortex. Nox4 is also expressed in fetal tissues, placenta, glioblastoma and vascular cells. Like gp91-phox, the enzymatic activity of Nox4 produces superoxide anions. In vascular cells, the addition of angiotensin II increases Nox4 expression, which suggests a role for Nox-4 in vascular oxidative stress response.

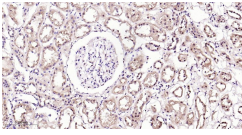
VALIDATION IMAGES



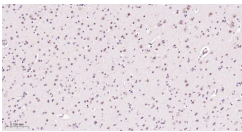
25 ug total protein per lane of various lysates (see on figure) probed with NADPH oxidase 4 monoclonal antibody, unconjugated (bsm-52390R) at 1:1000 dilution and 4°C overnight incubation. Followed by conjugated secondary antibody incubation at r.t. for 60 min.



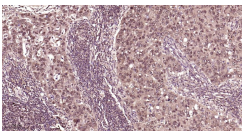
Paraformaldehyde-fixed, paraffin embedded Rat Kidney; Antigen retrieval by boiling in sodium citrate buffer (pH6.0) for 15 min; The section was incubated with NADPH oxidase 4 Monoclonal Antibody, Unconjugated(bsm-52390R) at 1:200 overnight at 4°C, followed by conjugation to the bs-0295G-HRP and DAB (C-0010) staining.



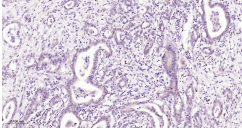
Paraformaldehyde-fixed, paraffin embedded Human Kidney; Antigen retrieval by boiling in sodium citrate buffer (pH6.0) for 15 min; The section was incubated with NADPH oxidase 4 Monoclonal Antibody, Unconjugated(bsm-52390R) at 1:200 overnight at 4°C, followed by conjugation to the bs-0295G-HRP and DAB (C-0010) staining.



Paraformaldehyde-fixed, paraffin embedded Human Glioma; Antigen retrieval by boiling in sodium citrate buffer (pH6.0) for 15 min; The section was incubated with NADPH oxidase 4 Monoclonal Antibody, Unconjugated(bsm-52390R) at 1:200 overnight at 4°C, followed by conjugation to the bs-0295G-HRP and DAB (C-0010) staining.



Paraformaldehyde-fixed, paraffin embedded Human Breast Cancer; Antigen retrieval by boiling in sodium citrate buffer (pH6.0) for 15 min; The section was incubated with NADPH oxidase 4 Monoclonal Antibody, Unconjugated(bsm-52390R) at 1:200 overnight at 4°C, followed by conjugation to the bs-0295G-HRP and DAB (C-0010) staining.



Paraformaldehyde-fixed, paraffin embedded Human Pancreatic Cancer; Antigen retrieval by boiling in sodium citrate buffer (pH6.0) for 15 min; The section was incubated with NADPH oxidase 4 Monoclonal Antibody, Unconjugated(bsm-52390R) at 1:200 overnight at 4°C, followed by conjugation to the bs-0295G-HRP and DAB (C-0010) staining.